

ARCHITECTURAL HERITAGE

— HANDMADE GARDEN COLLECTIONS —



The last year, for us all, has passed like no other. We at Architectural Heritage count ourselves fortunate to have been kept busy in a frenetic blur of sales, shows and deliveries to clients, old and new – we thank you all. It is then with some surprise that I find myself writing this forward to our 2022 catalogue and, even with the restrictions of the pandemic, we have looked again to innovate and advance the collections herewith.

Continuing with the theme borne out of my wish to consolidate and communicate our *six Handmade Garden Collections*, predominately defined by material, we have added a square table, seating four, to the *Forged Iron Garden Dining & Furniture Collection* – more designs to follow this year. We have re-introduced seat and urn designs into our *Carved Natural Stone Collection*. We have created both new and bespoke designs, be they planters or water features, within the *Verdigris Copper Planter Collection*. Within the *Curated Garden Collection*, we are pleased to showcase a new range of contemporary slat-back, sustainably sourced, hardwood garden furniture, these sitting alongside an extended version of the farmhouse table and benches set, to comfortably accommodate ten. Not forgetting the other areas of our business, being Garden Antiques, Modern British Art, the occasional Architectural Interior and, of course, our Consultancy, Valuation and Restoration services.

I do then look forward, as always, to being of assistance and wish to thank you for your kind interest in all that we do.

With best regards

Alex Puddy



ARCHITECTURAL HERITAGE

— HANDMADE GARDEN COLLECTIONS —



The Age-Patinated Artificial Stone
Garden Fountain & Ornament Collection



The Verdigris Copper
Garden Planter Collection



The Forged Iron Garden
Dining & Furniture Collection



The Carved Natural Stone
Garden Ornament Collection



The Lead Garden Ornament
& Planter Collection



The Curated
Garden Collection





**THE FORGED
IRON GARDEN
DINING &
FURNITURE
COLLECTION**



Garden Design by Bestall & Co Landscape Design

The Small Circular Garden Table with Two Ladderback Garden Chairs

Inspired by the 19th century French originals, this distinctive garden dining and furniture collection is forged with a long life outdoors in mind, with each handcrafted piece zinc-galvanised to protect against rust. The furniture is then primed and painted to our standard white or, alternatively, to your preferred paint colour and brand.

Chair height 81 cm [2' 8"]

Chair width 45 cm [1' 5¾"]

Chair depth 50 cm [1' 7¾"]

Table height 74 cm [2' 5"]

Table diameter 62 cm [2' ½"]



**The Small Circular Garden Table with
Two Low Ladderback Carver Garden Chairs**

Inspired by the 19th century French originals, this distinctive garden dining and furniture collection is forged with a long life outdoors in mind, with each handcrafted piece zinc-galvanised to protect against rust. The furniture is then primed and painted to our standard white or, alternatively, to your preferred paint colour and brand.

Chair height 83 cm [2' 8¾"]

Chair width 64 cm [2' 1¼"]

Chair depth 70 cm [2' 3½"]

Table height 74 cm [2' 5"]

Table diameter 62 cm [2' ½"]



The Small Circular Garden Table with Two Sprung Garden Chairs

Inspired by the 19th century French originals, this distinctive garden dining and furniture collection is forged with a long life outdoors in mind, with each handcrafted piece zinc-galvanised to protect against rust. The furniture is then primed and painted to our standard white or, alternatively, to your preferred paint colour and brand.

Chair height 93 cm [3' ½"]

Chair width 47 cm [1' 6½"]

Chair depth 46 cm [1' 6"]

Table height 74 cm [2' 5"]

Table diameter 62 cm [2' ½"]



**The Small Circular Garden Table with
Two Sprung Carver Garden Chairs**

Inspired by the 19th century French originals, this distinctive garden dining and furniture collection is forged with a long life outdoors in mind, with each handcrafted piece zinc-galvanised to protect against rust. The furniture is then primed and painted to our standard white or, alternatively, to your preferred paint colour and brand.

Chair height 93cm [3' 1/2"]
Chair width 50cm [1' 7 3/4"]
Chair depth 58cm [1' 10 3/4"]
Table height 74cm [2' 5"]
Table diameter 62cm [2' 1/2"]



The Medium Circular Garden Dining Table with Four Ladderback Garden Chairs

Inspired by the 19th century French originals, this distinctive garden dining and furniture collection is forged with a long life outdoors in mind, with each handcrafted piece zinc-galvanised to protect against rust. The furniture is then primed and painted to our standard white or, alternatively, to your preferred paint colour and brand.

Chair height 81 cm [2' 8"]

Chair width 45 cm [1' 5¾"]

Chair depth 50 cm [1' 7¾"]

Table height 74 cm [2' 5"]

Table diameter 110 cm [3' 7¼"]



The Medium Circular Garden Dining Table with Four Ladderback Carver Garden Chairs

Inspired by the 19th century French originals, this distinctive garden dining and furniture collection is forged with a long life outdoors in mind, with each handcrafted piece zinc-galvanised to protect against rust. The furniture is then primed and painted to our standard white or, alternatively, to your preferred paint colour and brand.

- Chair height 88cm [2' 10½"]
- Chair width 64cm [2' 1¼"]
- Chair depth 70cm [2' 3¼"]
- Table height 74cm [2' 5"]
- Table diameter 110cm [3' 7¼"]



The Medium Circular Garden Dining Table with Six Ladderback Garden Chairs

Inspired by the 19th century French originals, this distinctive garden dining and furniture collection is forged with a long life outdoors in mind, with each handcrafted piece zinc-galvanised to protect against rust. The furniture is then primed and painted to our standard white or, alternatively, to your preferred paint colour and brand.

Chair height 81 cm [2' 8"]

Chair width 45 cm [1' 5¾"]

Chair depth 50 cm [1' 7¾"]

Table height 74 cm [2' 5"]

Table diameter 110 cm [3' 7¼"]





**The Large Circular Garden Dining Table with
Four Ladderback Carver Garden Chairs**

Inspired by the 19th century French originals, this distinctive garden dining and furniture collection is forged with a long life outdoors in mind, with each handcrafted piece zinc-galvanised to protect against rust. The furniture is then primed and painted to our standard white or, alternatively, to your preferred paint colour and brand.

Chair height 88cm [2' 10½"]

Chair width 64cm [2' 1¼"]

Chair depth 70cm [2' 3¼"]

Table height 74cm [2' 5"]

Table diameter 126cm [4' 1½"]



The Large Circular Garden Dining Table with Six Ladderback Garden Chairs

Inspired by the 19th century French originals, this distinctive garden dining and furniture collection is forged with a long life outdoors in mind, with each handcrafted piece zinc-galvanised to protect against rust. The furniture is then primed and painted to our standard white or, alternatively, to your preferred paint colour and brand.

Chair height 81 cm [2' 8"]

Chair width 45 cm [1' 5¾"]

Chair depth 50 cm [1' 7¾"]

Table height 74 cm [2' 5"]

Table diameter 126 cm [4' 1½"]



The Small Square Garden Dining Table with Four Ladderback Garden Chairs

Inspired by the 19th century French originals, this distinctive garden dining and furniture collection is forged with a long life outdoors in mind, with each handcrafted piece zinc-galvanised to protect against rust. The furniture is then primed and painted to our standard white or, alternatively, to your preferred paint colour and brand.

Chair height 81 cm [2' 8"]
Chair width 45 cm [1' 5¾"]
Chair depth 50 cm [1' 7¾"]
Table height 74 cm [2' 5"]
Table width 86 cm [2' 10"]
Table depth 86 cm [2' 10"]





The Small Rectangular Garden Dining Table with Four Ladderback Garden Chairs

Inspired by the 19th century French originals, this distinctive garden dining and furniture collection is forged with a long life outdoors in mind, with each handcrafted piece zinc-galvanised to protect against rust. The furniture is then primed and painted to our standard white or, alternatively, to your preferred paint colour and brand.

- Chair height 81 cm [2' 8"]
- Chair width 45 cm [1' 5¾"]
- Chair depth 50 cm [1' 7¾"]
- Table height 74 cm [2' 5"]
- Table length 161 cm [5' 3½"]
- Table width 86 cm [2' 10"]





The Small Rectangular Garden Dining Table with Six Ladderback Garden Chairs

Inspired by the 19th century French originals, this distinctive garden dining and furniture collection is forged with a long life outdoors in mind, with each handcrafted piece zinc-galvanised to protect against rust. The furniture is then primed and painted to our standard white or, alternatively, to your preferred paint colour and brand.

- Chair height 81 cm [2' 8"]
- Chair width 45 cm [1' 5¾"]
- Chair depth 50 cm [1' 7¾"]
- Table height 74 cm [2' 5"]
- Table length 161 cm [5' 3½"]
- Table width 86 cm [2' 10"]



The Small Rectangular Garden Dining Table with Four Ladderback Garden Chairs and Two Ladderback Carver Garden Chairs

Inspired by the 19th century French originals, this distinctive garden dining and furniture collection is forged with a long life outdoors in mind, with each handcrafted piece zinc-galvanised to protect against rust. The furniture is then primed and painted to our standard white or, alternatively, to your preferred paint colour and brand.

Chair height 81 cm [2' 8"]

Chair width 45 cm [1' 5¾"]

Chair depth 50 cm [1' 7¾"]

Carver height 88 cm [2' 10½"]

Carver width 64 cm [2' 1¼"]

Carver depth 70 cm [2' 3¼"]

Table height 74 cm [2' 5"]

Table length 161 cm [5' 3½"]

Table width 86 cm [2' 10"]



The Large Rectangular Garden Dining Table with Eight Ladderback Garden Chairs

Inspired by the 19th century French originals, this distinctive garden dining and furniture collection is forged with a long life outdoors in mind, with each handcrafted piece zinc-galvanised to protect against rust. The furniture is then primed and painted to our standard white or, alternatively, to your preferred paint colour and brand.

Chair height 81 cm [2' 8"]
Chair width 45 cm [1' 5¾"]
Chair depth 50 cm [1' 7¾"]
Table height 74 cm [2' 5"]
Table length 252 cm [8' 3¼"]
Table width 86 cm [2' 10"]



The Large Rectangular Garden Dining Table with Six Ladderback Garden Chairs and Two Ladderback Carver Garden Chairs

Inspired by the 19th century French originals, this distinctive garden dining and furniture collection is forged with a long life outdoors in mind, with each handcrafted piece zinc-galvanised to protect against rust. The furniture is then primed and painted to our standard white or, alternatively, to your preferred paint colour and brand.

Chair height 81 cm [2' 8"]

Chair width 45 cm [1' 5¾"]

Chair depth 50 cm [1' 7¾"]

Carver height 88 cm [2' 10½"]

Carver width 64 cm [2' 1¼"]

Carver depth 70 cm [2' 3¼"]

Table height 74 cm [2' 5"]

Table length 252 cm [8' 3¼"]

Table width 86 cm [2' 10"]



The Large Rectangular Garden Dining Table with Ten Ladderback Garden Chairs

Inspired by the 19th century French originals, this distinctive garden dining and furniture collection is forged with a long life outdoors in mind, with each handcrafted piece zinc-galvanised to protect against rust. The furniture is then primed and painted to our standard white or, alternatively, to your preferred paint colour and brand.

Chair height 81 cm [2' 8"]
Chair width 45 cm [1' 5¾"]
Chair depth 50 cm [1' 7¾"]
Table height 74 cm [2' 5"]
Table length 252 cm [8' 3¼"]
Table width 86 cm [2' 10"]



The Large Rectangular Garden Dining Table with Eight Ladderback Garden Chairs and Two Ladderback Carver Garden Chairs

Inspired by the 19th century French originals, this distinctive garden dining and furniture collection is forged with a long life outdoors in mind, with each handcrafted piece zinc-galvanised to protect against rust. The furniture is then primed and painted to our standard white or, alternatively, to your preferred paint colour and brand.

Chair height 81 cm [2' 8"]

Chair width 45 cm [1' 5¾"]

Chair depth 50 cm [1' 7¾"]

Carver height 88 cm [2' 10½"]

Carver width 64 cm [2' 1¼"]

Carver depth 70 cm [2' 3¼"]

Table height 74 cm [2' 5"]

Table length 252 cm [8' 3¼"]

Table width 86 cm [2' 10"]



The Rectangular Garden Coffee Table with Two Low Ladderback Carver Garden Chairs and a Small Straight Ladderback Garden Seat

Inspired by the 19th century French originals, this distinctive garden dining and furniture collection is forged with a long life outdoors in mind, with each handcrafted piece zinc-galvanised to protect against rust. The furniture is then primed and painted to our standard white or, alternatively, to your preferred paint colour and brand.

Seat height 83 cm [2' 8¾"]
Seat width 121 cm [3' 11½"]
Seat depth 60 cm [1' 11½"]

Carver height 83 cm [2' 8¾"]
Carver width 64 cm [2' 1¼"]
Carver depth 70 cm [2' 3½"]

Table height 47 cm [1' 6½"]
Table length 122 cm [4']
Table width 70 cm [2' 3½"]



The Rectangular Garden Coffee Table with Two Low Ladderback Carver Garden Chairs and a Medium Straight Ladderback Garden Seat

Inspired by the 19th century French originals, this distinctive garden dining and furniture collection is forged with a long life outdoors in mind, with each handcrafted piece zinc-galvanised to protect against rust. The furniture is then primed and painted to our standard white or, alternatively, to your preferred paint colour and brand.

Seat height 83 cm [2' 8¾"]
Seat width 148 cm [4' 10¼"]
Seat depth 60 cm [1' 11½"]

Carver height 83 cm [2' 8¾"]
Carver width 64 cm [2' 1¼"]
Carver depth 70 cm [2' 3½"]

Table height 47 cm [1' 6½"]
Table length 122 cm [4']
Table width 70 cm [2' 3½"]



The Small Straight Ladderback Garden Seat

Inspired by the 19th century French originals, this distinctive garden dining and furniture collection is forged with a long life outdoors in mind, with each handcrafted piece zinc-galvanised to protect against rust. The furniture is then primed and painted to our standard white or, alternatively, to your preferred paint colour and brand.

Height 83 cm [2' 8¾"]
Width 121 cm [3' 11½"]
Depth 60 cm [1' 11½"]



The Medium Straight Ladderback Garden Seat

Inspired by the 19th century French originals, this distinctive garden dining and furniture collection is forged with a long life outdoors in mind, with each handcrafted piece zinc-galvanised to protect against rust. The furniture is then primed and painted to our standard white or, alternatively, to your preferred paint colour and brand.

Height 83 cm [2' 8¾"]
Width 148 cm [4' 10¼"]
Depth 60 cm [1' 11½"]



Garden Design by Bestall & Co Landscape Design

The Large Straight Ladderback Garden Seat

Inspired by the 19th century French originals, this distinctive garden dining and furniture collection is forged with a long life outdoors in mind, with each handcrafted piece zinc-galvanised to protect against rust. The furniture is then primed and painted to our standard white or, alternatively, to your preferred paint colour and brand.

Height 83 cm [2' 8¾"]

Width 192 cm [6' 3½"]

Depth 60 cm [1' 11½"]



The Semi-Circular Ladderback Garden Seat

Inspired by the 19th century French originals, this distinctive garden dining and furniture collection is forged with a long life outdoors in mind, with each handcrafted piece zinc-galvanised to protect against rust. The furniture is then primed and painted to our standard white or, alternatively, to your preferred paint colour and brand.

Height 85 cm [2' 9½"]

Width 208 cm [6' 10"]

Depth 90 cm [2' 11½"]



The Semi-Circular Ladderback Garden Tree Seat with Arms

Inspired by the 19th century French originals, this distinctive garden dining and furniture collection is forged with a long life outdoors in mind, with each handcrafted piece zinc-galvanised to protect against rust. The furniture is then primed and painted to our standard white or, alternatively, to your preferred paint colour and brand.

Height 88 cm [2' 10½"]

Width 190 cm [6' 2¾"]

Depth 90 cm [2' 11½"]



The Circular Ladderback Garden Tree Seat

Inspired by the 19th century French originals, this distinctive garden dining and furniture collection is forged with a long life outdoors in mind, with each handcrafted piece zinc-galvanised to protect against rust. The furniture is then primed and painted to our standard white or, alternatively, to your preferred paint colour and brand.

Height 88cm [2' 10½"]
Diameter 190cm [6' 2¾"]



The Sprung Garden Chair

Height 93 cm [3' 1/2"]
Width 47 cm [1' 6 1/2"]
Depth 46 cm [1' 6"]



The Sprung Carver Garden Chair

Height 93 cm [3' 1/2"]
Width 50 cm [1' 7 3/4"]
Depth 58 cm [1' 10 3/4"]

Inspired by the 19th century French originals, this distinctive garden dining and furniture collection is forged with a long life outdoors in mind, with each handcrafted piece zinc-galvanised to protect against rust. The furniture is then primed and painted to our standard white or, alternatively, to your preferred paint colour and brand.





**The Ladderback
Garden Chair**

Height 81 cm [2' 8"]
Width 45 cm [1' 5¾"]
Depth 50 cm [1' 7¾"]



**The Ladderback Carver
Garden Chair – High**

Height 88 cm [2' 10½"]
Width 64 cm [2' 1¼"]
Depth 70 cm [2' 3¼"]



**The Ladderback Carver
Garden Chair – Low**

Height 83 cm [2' 8¾"]
Width 64 cm [2' 1¼"]
Depth 70 cm [2' 3½"]



**The Small Circular
Garden Table**

Height 74 cm [2' 5"]
Diameter 62 cm [2' 1/2"]



**The Medium Circular
Garden Dining Table**

Height 74 cm [2' 5"]
Diameter 110 cm [3' 7 1/4"]



**The Large Circular
Garden Dining Table**

Height 74 cm [2' 5"]
Diameter 126 cm [4' 1 1/2"]



**The Rectangular
Garden Coffee Table**

Height 47 cm [1' 6½"]

Length 122 cm [4']

Width 70 cm [2' 3½"]



**The Small Square
Garden Dining Table**

Height 74 cm [2' 5"]

Length 86 cm [2' 10"]

Width 86 cm [2' 10"]



The Small Rectangular Garden Dining Table

Height 74 cm [2' 5"]
Length 161 cm [5' 3½"]
Width 86 cm [2' 10"]



The Large Rectangular Garden Dining Table

Height 74 cm [2' 5"]
Length 252 cm [8' 3¼"]
Width 86 cm [2' 10"]





**THE AGE-
PATINATED
ARTIFICIAL
STONE GARDEN
FOUNTAIN &
ORNAMENT
COLLECTION**

Image courtesy of Nico Willis Photography/Miscelden Estate



A Suffolk landscape designed by Timothy Garden Design

The Large Low Single Tier Fountain

A large, low, single tier fountain in age-patinated artificial stone, the bowl having egg and dart moulding to the rim, raised upon a circular foot and square base. Surmounted by a spout in the form of a pineapple. A pump pack is available.

- Overall height
84cm [2'9"]
- Overall diameter
135cm [4'5"]
- Square at base
67cm [2'2"]

The Large Single Tier Fountain

A large single tier fountain in age-patinated artificial stone, the bowl having egg and dart moulding to the rim, raised upon a baluster pedestal carved with acanthus foliage, with circular foot and square base. Surmounted by a spout in the form of a pineapple. A pump pack is available.

- Overall height
152.5cm [5']
- Overall diameter
135cm [4'5"]
- Square at base
67cm [2'2"]





Installation and photograph by Catswold Estates and Gardens Ltd

The Two Tier Fountain

A two tier fountain in age-patinated artificial stone taken from an 18th century original, each bowl having egg and dart moulding to the rim, raised upon baluster pedestals with carved foliage. The upper bowl is surmounted by a pineapple finial. A pump pack is available.

Overall height
262cm [8'7"]
Overall diameter
137cm [4'6"]
Square at base
67cm [2'2"]

The Decorative Circular Pool Surround

An age-patinated artificial stone circular pool surround having egg and dart decoration.

External diameter
426cm [14']
Internal diameter
366cm [12']
Height
22cm [8'½"]



The Great Westwood Pool Surround

A large and impressive
age-patinated artificial
stone pool surround at
6 metres diameter.

External diameter
600 cm [19' 8"]

Height
35 cm [1' 1¾"]



The Single Tier Fountain

A single tier fountain in age-patinated artificial stone, the bowl having egg and dart moulding to the rim raised upon a pedestal with acanthus foliage on square base. Surmounted by a spout in the form of a pineapple. Also available in a natural stone colour patination. A pump pack is available.

Overall height
125 cm [4' 1"]
Overall diameter
80 cm [2' 7½"]
Square at base
45 cm [1' 6"]

The Circular Pool Surround

An age-patinated artificial stone circular pool surround. Also available in a natural stone colour patination.

External diameter
320 cm [10' 6"]
Height
28 cm [11"]



Marklarphotography.co.uk, design joanmederson.com, created by gorfendesign.co.uk

The Rectangular Pool Surround

An artificial stone pool surround of rectangular form, finished in a natural stone colour patination.

Height 28 cm [11"]

Width 362 cm [11' 6½"]

Length 562 cm [18' 5"]

The Wall Fountain with Lion Mask

A wall fountain in age-patinated artificial stone, having arched back plate inset with a lead lion mask spout, raised above a 'D' shaped bowl with stepped rectangular base. A pump pack is available.

Height 151 cm [5']

Width 80 cm [2' 7"]

Depth 51 cm [1' 8"]

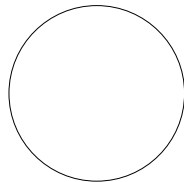






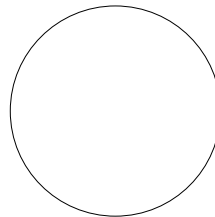
The Sphere

An age-patinated artificial stone sphere. Perfect for driveway edging or as finials.



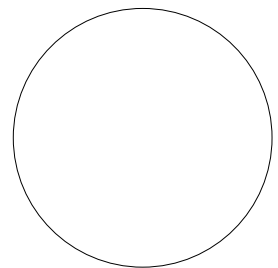
Small

Diameter 38cm [1' 3"]



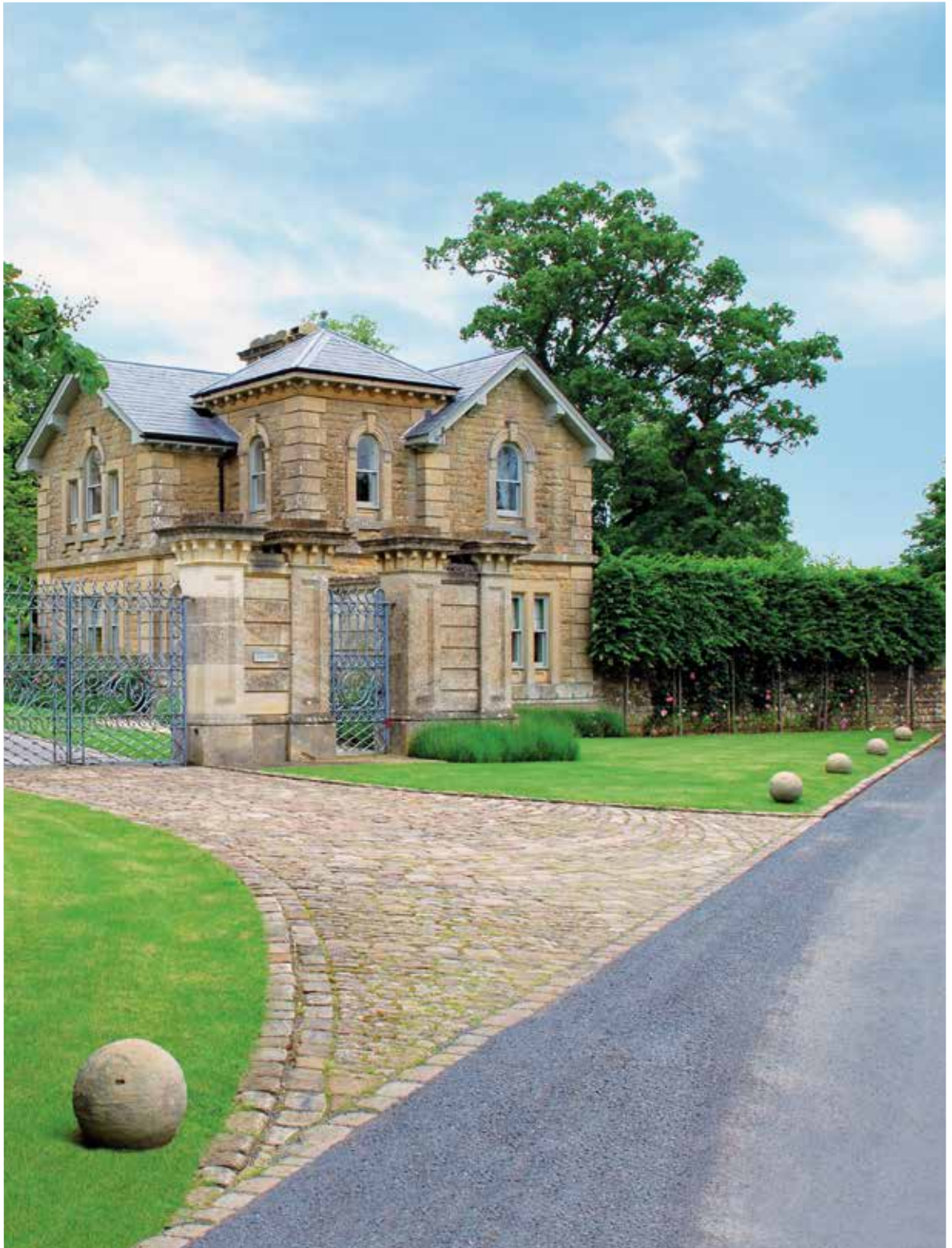
Medium

Diameter 45.5cm [1' 6"]



Large

Diameter 56cm [1' 10"]



**The William IV
Sundial Pedestal**

An age-patinated artificial stone sundial pedestal, available with choice of armillary sphere.

**Shown with Greenwich
Armillary Sphere**

Overall height
191 cm [6' 3¼"]
Square at base
68 cm [2' 2½"]
Sphere diameter
70 cm [2' 3½"]





Image courtesy of Butter Wakefield Garden Design



**THE VERDIGRIS
COPPER GARDEN
PLANTER
COLLECTION**





National Trust

The Sissinghurst Castle Garden Copper Planter

Sissinghurst Estate was a ruin when purchased by Vita Sackville-West and Harold Nicolson in 1930. After three years of clearing the long-overgrown land, the creation of 'a garden where none was' became a joint labour of love that would last for over three decades.

In general, Harold was responsible for the design and layout along strong architectural lines, while Vita (so named to differentiate her from her mother, also a Victoria) was the head of her team of gardeners, innovating with informal planting schemes to give visitors a



© The Cecil Beaton Studio Archive at Sotheby's



© National Trust Image/Andrew Butler

ARCHITECTURAL HERITAGE

GARDEN | MODERN BRITISH | INTERIOR



© National Trust Images/Amhel de Serra

horticultural experience of discovery and exploration.

First opened to the public in 1937, the gardens 'drew on the sense of an abandoned past' with the old Tower at its ancient heart. Although the White Garden is the most well-known of Sissinghurst's ten garden rooms, the Cottage Garden by contrast has a sunset planting scheme of hot colours, warm reds and golds, which shout in a riot of colour in late summer and autumn. Here, in the centre of the garden nestled between four tall Irish yews, is an original Copper Copper. Probably found locally (maybe even in the Tower) this now planter is a remnant of some long-outdated Victorian water heating system, reused by Vita as an axis feature.

Invited by the National Trust, who now look after Sissinghurst Castle Garden for the nation, Architectural Heritage is proud to have faithfully copied the original planter down to the last rivet. Fashioned from the same grade of thick sheet brass, we have fabricated the distinctive bulbous shape and verdigris patinated *The Sissinghurst Castle Garden Copper Planter* to last another lifetime.

Poignantly, Vita wrote in 1959 'his scoop... it is still there – a little hollow in one of the stones near the central copper basin', Harold used it to measure how much rain had fallen in the night. Three years later Vita passed, however, the garden that 'tethered her floating heart' remains to this day for us all to enjoy.



© National Trust Images/David Sellman





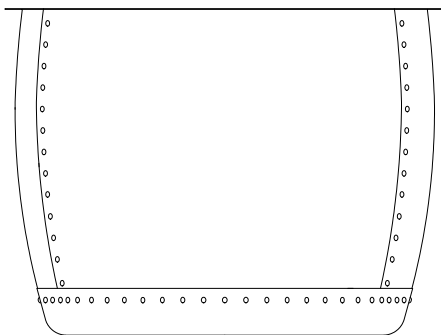
National
Trust

**The Sissinghurst
Castle Garden
Copper Planters**

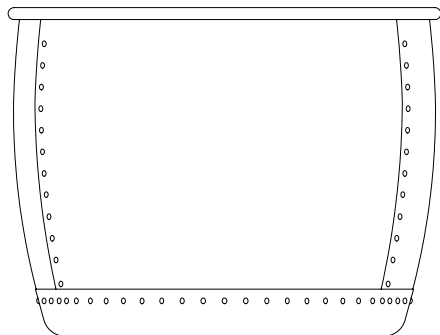
The Sissinghurst Castle Garden Copper Planter is now available with either a flat top or rolled edge. Hand crafted from heavy gauge brass with the distinctive bulbous shape, this planter is riveted together and then verdigris patinated to replicate the original.



© National Trust Images/Andrew Butler



Height 70 cm [2' 3½"]
Diameter 94 cm [3' 1"]

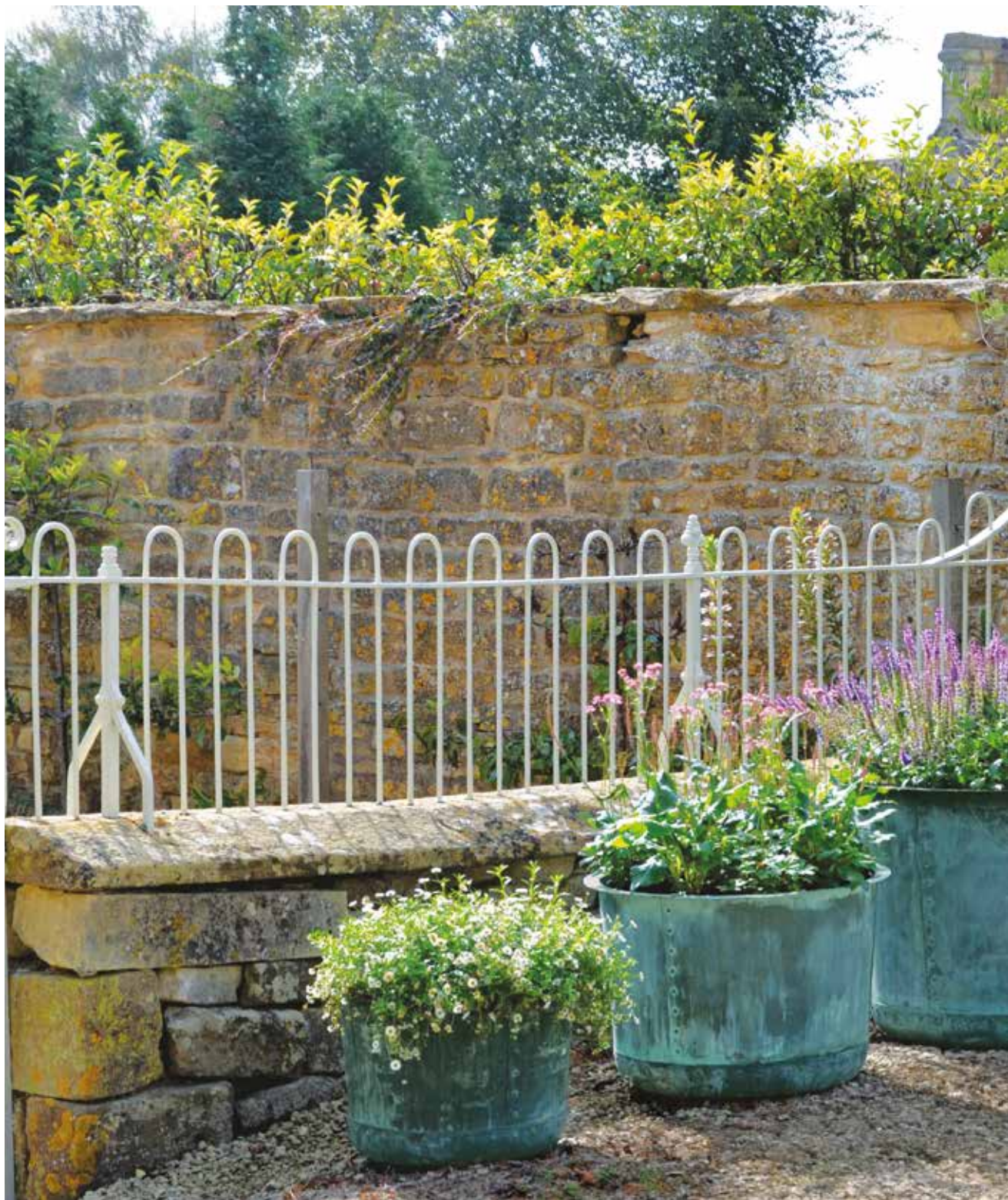


Height 70 cm [2' 3½"]
Diameter 92 cm [3' ¼"]



© National Trust Images/Andrew Butler

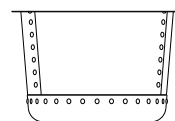






The Circular Copper Planters

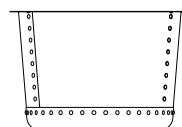
Hand crafted from heavy gauge brass, riveted together and then verdigris patinated to imitate the Victorian antique originals.



Small

Height 35 cm [1' 1 $\frac{3}{4}$ "]

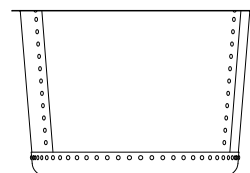
Diameter 54 cm [1' 9 $\frac{1}{4}$ "]



Medium

Height 45 cm [1' 5 $\frac{3}{4}$ "]

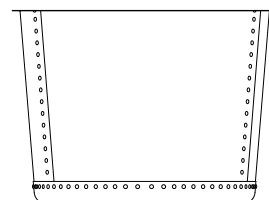
Diameter 68.5 cm [2' 3"]



Large

Height 60 cm [1' 11 $\frac{1}{2}$ "]

Diameter 89.4 cm [2' 11 $\frac{1}{4}$ "]



Very Large

Height 73.5 cm [2' 5"]

Diameter 100.8 cm [3' 3 $\frac{3}{4}$ "]



**The Circular
Copper Planter
Small**

Hand crafted from heavy gauge brass, riveted together and then verdigris patinated to imitate the Victorian antique originals.

Height 35 cm [1' 1 $\frac{3}{4}$ "]

Diameter 54 cm [1' 9 $\frac{1}{4}$ "]



**The Circular
Copper Planter
Medium**

Hand crafted from heavy gauge brass, riveted together and then verdigris patinated to imitate the Victorian antique originals.

Height 45 cm [1' 5¾"]

Diameter 68.5 cm [2' 3"]



**The Circular
Copper Planter
Large**

Hand crafted from heavy gauge brass, riveted together and then verdigris patinated to imitate the Victorian antique originals.

Height 60cm [1' 11½"]

Diameter 89.4cm [2' 11¼"]



**The Circular
Copper Planter
Very Large**

Hand crafted from heavy gauge brass, riveted together and then verdigris patinated to imitate the Victorian antique originals.

Height 73.5 cm [2' 5"]

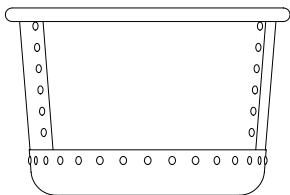
Diameter 100.8 cm [3' 3¾"]



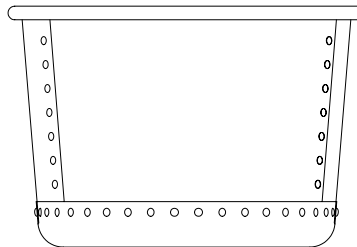


**The Circular
Copper Planters
Rolled Edge**

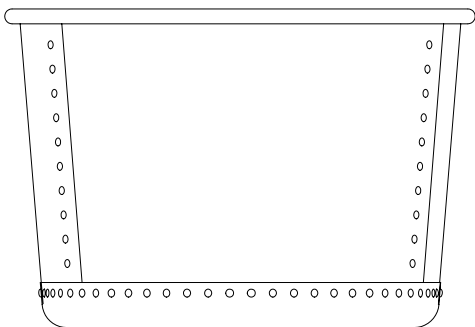
Hand crafted from heavy gauge brass with a rolled-edge top, riveted together and verdigris patinated.



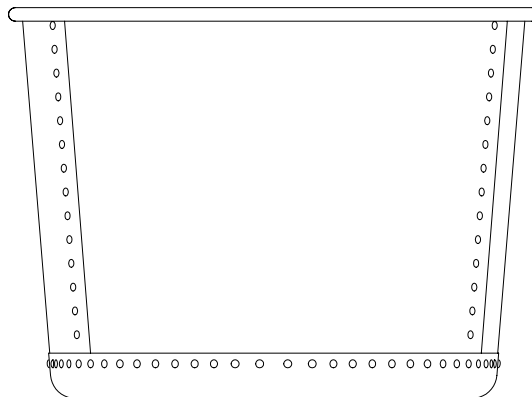
Small
Height 35 cm [1' 1 $\frac{3}{4}$ "]
Width 53.2 cm [1' 9"]



Medium
Height 45 cm [1' 5 $\frac{3}{4}$ "]
Width 66.7 cm [2' 2 $\frac{1}{4}$ "]



Large
Height 60 cm [1' 11 $\frac{1}{2}$ "]
Width 88.6 cm [2' 11"]



Very Large
Height 73.5 cm [2' 5"]
Width 99.7 cm [3' 3 $\frac{1}{4}$ "]



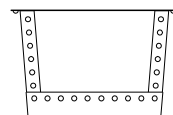
Featured: The Circular Copper Planter - Large - Rolled Edge





The Square Copper Planters

Hand crafted from heavy gauge brass, riveted together and then verdigris patinated to echo the Victorian antique originals.

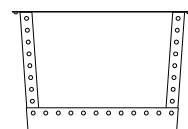


Small

Height 35 cm [1' 1 $\frac{3}{4}$ "

Width 54 cm [1' 9 $\frac{1}{4}$ "

Depth 54 cm [1' 9 $\frac{1}{4}$ "

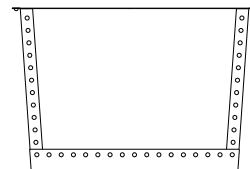


Medium

Height 45 cm [1' 5 $\frac{3}{4}$ "

Width 68.5 cm [2' 3"

Depth 68.5 cm [2' 3"

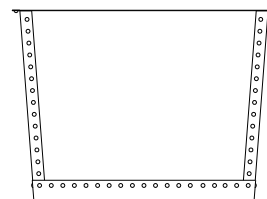


Large

Height 60 cm [1' 11 $\frac{1}{2}$ "

Width 89.4 cm [2' 11 $\frac{1}{4}$ "

Depth 89.4 cm [2' 11 $\frac{1}{4}$ "



Very Large

Height 73.5 cm [2' 5"

Width 100.8 cm [3' 3 $\frac{1}{2}$ "

Depth 100.8 cm [3' 3 $\frac{1}{2}$ "



**The Square
Copper Planter
Small**

Hand crafted from heavy gauge brass, riveted together and then verdigris patinated to echo the Victorian antique originals.

Height 35cm [1' 1 $\frac{3}{4}$ "

Width 54cm [1' 9 $\frac{1}{4}$ "

Depth 54cm [1' 9 $\frac{1}{4}$ "



Photograph by Eleanor Walpole/Garden Design by Butler-Workefield



**The Square
Copper Planter
Medium**

Hand crafted from heavy gauge brass, riveted together and then verdigris patinated to echo the Victorian antique originals.

Height 45cm [1' 5³/₄"

Width 68.5cm [2' 3"

Depth 68.5cm [2' 3"



Photograph by Eleanor Walpole/Garden Design by Bunter Wakefield



**The Square
Copper Planter
Large**

Hand crafted from heavy gauge brass, riveted together and then verdigris patinated to echo the Victorian antique originals.

Height 60cm [1' 11½"]

Width 89.4cm [2' 11¼"]

Depth 89.4cm [2' 11¼"]





Marklandphotography.co.uk, design_joanmeddersen.com, created by gordenesign.co.uk

**The Square
Copper Planter
Very Large**

Hand crafted from heavy gauge brass, riveted together and then verdigris patinated to echo the Victorian antique originals.

Height 73.5cm [2' 5"]

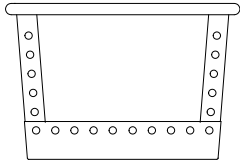
Width 100.8cm [3' 3¾"]

Depth 100.8cm [3' 3¾"]



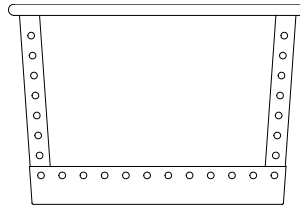
**The Square
Copper Planters
Rolled Edge**

Hand crafted from heavy gauge brass with a rolled-edge top, riveted together and verdigris patinated.



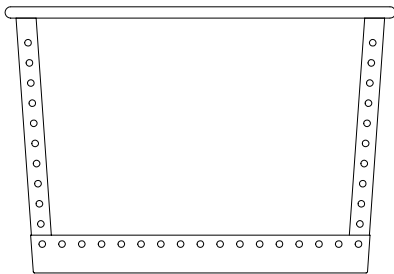
Small

Height 35 cm [1' 1 $\frac{3}{4}$ "]
Width 52.6 cm [1' 8 $\frac{3}{4}$ "]
Depth 52.6 cm [1' 8 $\frac{3}{4}$ "]



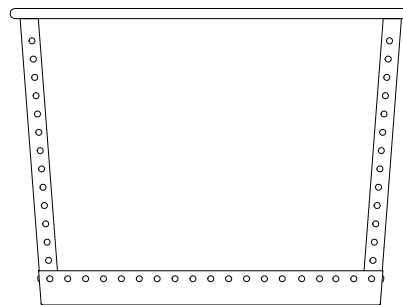
Medium

Height 45 cm [1' 5 $\frac{3}{4}$ "]
Width 67.1 cm [2' 2 $\frac{1}{2}$ "]
Depth 67.1 cm [2' 2 $\frac{1}{2}$ "]



Large

Height 60 cm [1' 11 $\frac{1}{2}$ "]
Width 88.1 cm [2' 10 $\frac{3}{4}$ "]
Depth 88.1 cm [2' 10 $\frac{3}{4}$ "]



Very Large

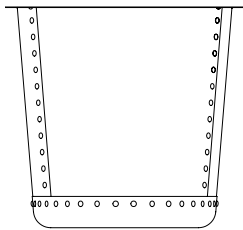
Height 73.5 cm [2' 5"
Width 99.4 cm [3' 3 $\frac{1}{4}$ "]
Depth 99.4 cm [3' 3 $\frac{1}{4}$ "]



Featured: The Square Copper Planter – Large – Rolled Edge with Drip Tray

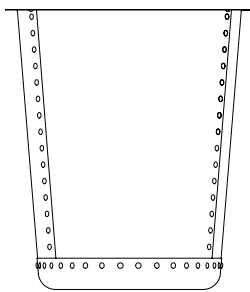
The Circular Terrace Copper Planters

Hand crafted from heavy gauge brass with flat top or rolled-edge option, riveted together and verdigris patinated.



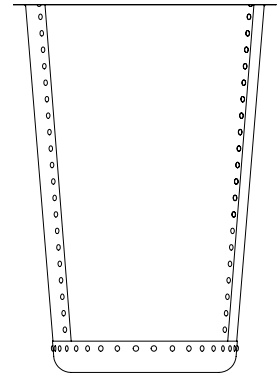
Small

Height 60 cm [1' 11½"]
Diameter 64.7 cm [2' 1½"]



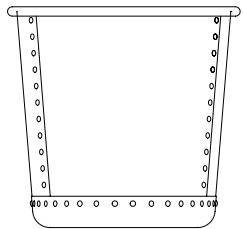
Medium

Height 76.2 cm [2' 6"]
Diameter 67.4 cm [2' 2¾"]



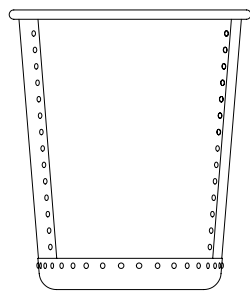
Large

Height 100 cm [3' 3½"]
Diameter 71.3 cm [2' 4¼"]



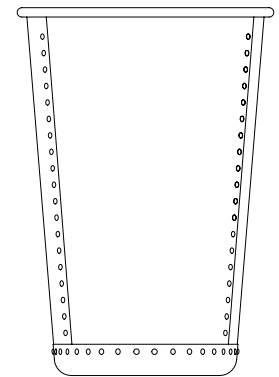
Small – Rolled Edge

Height 60 cm [1' 11½"]
Diameter 63.2 cm [2' 1"]



Medium – Rolled Edge

Height 76.2 cm [2' 6"]
Diameter 65.9 cm [2' 2"]



Large – Rolled Edge

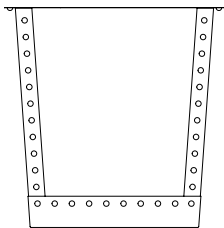
Height 100 cm [3' 2½"]
Diameter 69.8 cm [2' 3½"]



Featured: The Grailor Terrace Copper Planter – Medium

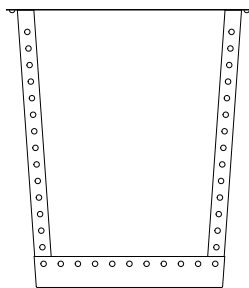
The Square Terrace Copper Planters

Hand crafted from heavy gauge brass with flat top or rolled-edge option, riveted together and verdigris patinated.



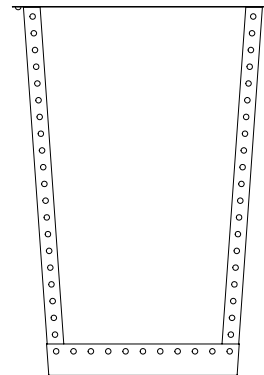
Small

Height 60 cm [1' 11½"]
Width 60 cm [1' 11½"]
Depth 60 cm [1' 11½"]



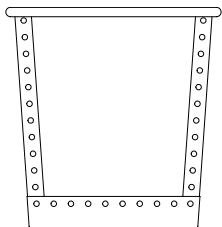
Medium

Height 76.2 cm [2' 6"]
Width 67.4 cm [2' 2½"]
Depth 67.4 cm [2' 2½"]



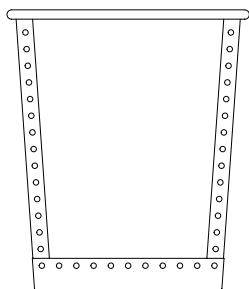
Large

Height 100 cm [3' 3½"]
Width 70.8 cm [2' 4"]
Depth 70.8 cm [2' 4"]



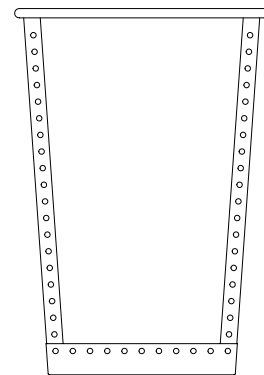
Small – Rolled Edge

Height 60 cm [1' 11½"]
Width 58.7 cm [1' 11¼"]
Depth 58.7 cm [1' 11¼"]



Medium – Rolled Edge

Height 76.2 cm [2' 6"]
Width 66.1 cm [2' 2"]
Depth 66.1 cm [2' 2"]



Large – Rolled Edge

Height 100 cm [3' 3½"]
Width 69.4 cm [2' 3½"]
Depth 69.4 cm [2' 3½"]



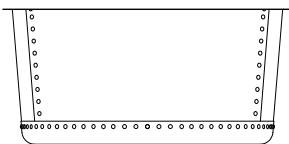
Featured: The Square Terrace Copper Planter – Medium – Rolled Edge



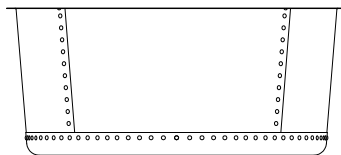
Marklarphotography.co.uk design jammederson.com created by gordendesign.co.uk

The Courtyard Copper Planters

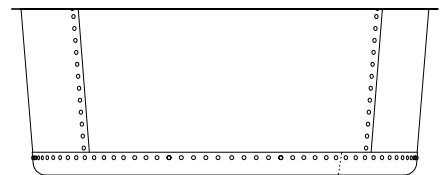
Hand crafted from heavy gauge brass, riveted together and then verdigris patinated to imitate the Victorian antique originals.



Small
Height 50 cm [1' 7¾"]
Diameter 107 cm [3' 6¼"]



Medium
Height 55 cm [1' 9¾"]
Diameter 127 cm [4' 2"]



Large
Height 62.2 cm [2' ½"]
Diameter 159.5 cm [5' 2¾"]

**The Courtyard
Copper Planter
Small**

Hand crafted from heavy gauge brass, riveted together and then verdigris patinated to imitate the Victorian antique originals.

Height 50cm [1' 7¾"]

Diameter 107cm [3' 6¼"]



Image courtesy of Clare Bennet-Naghineh

**The Courtyard
Copper Planter**
Medium

Hand crafted from heavy gauge brass, riveted together and then verdigris patinated to imitate the Victorian antique originals.

Height 55cm [1' 9¾"]

Diameter 127cm [4' 2"]



Photograph by Eleanor Walpole/Garden Design by Butter Wakefield



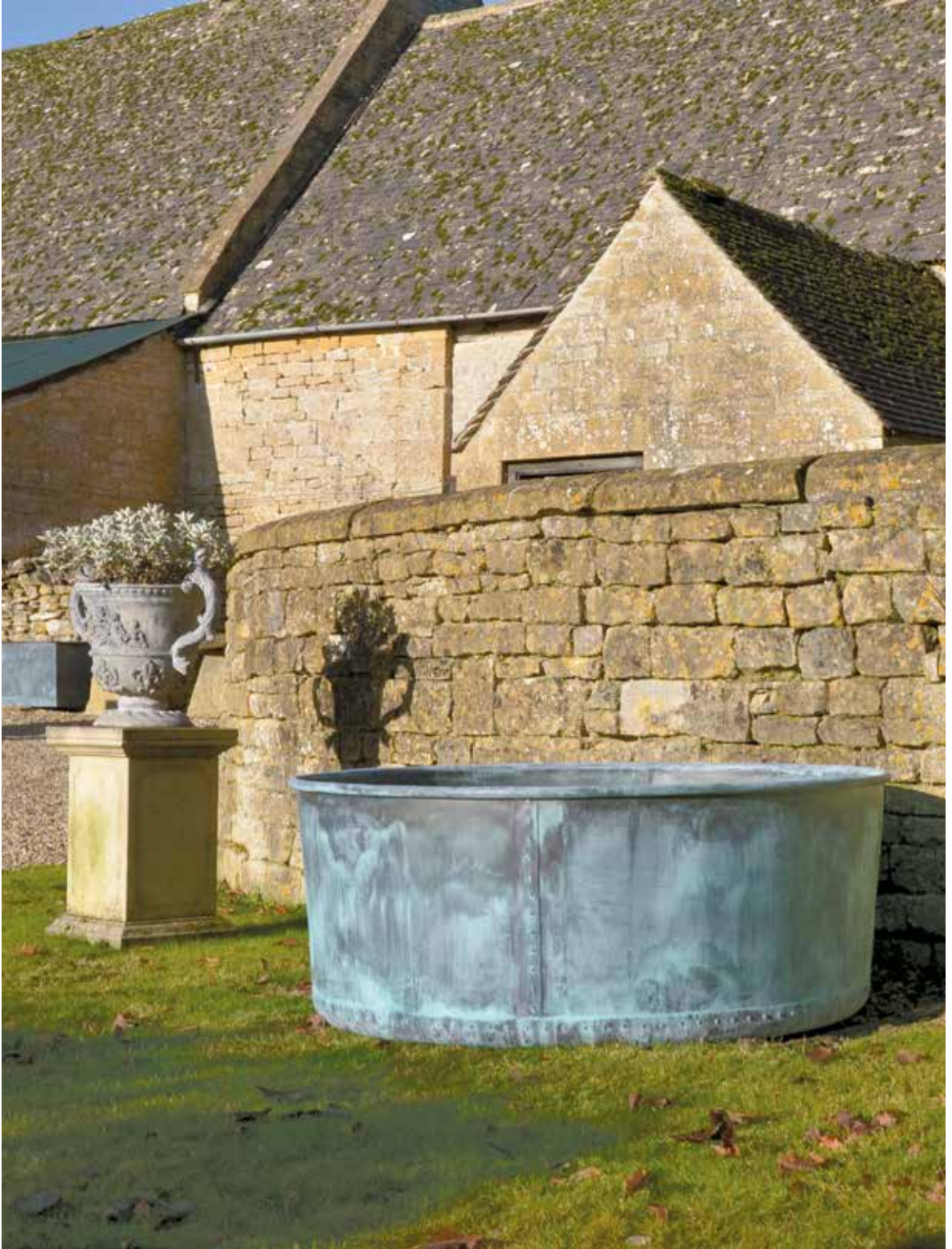
**The Courtyard
Copper Planter
Large**

Hand crafted from heavy gauge brass, riveted together and then verdigris patinated to imitate the Victorian antique originals.

Height 62.2 cm [2' 1/2"]

Diameter 159.5 cm [5' 2 3/4"]

Image courtesy of Sarah Gore



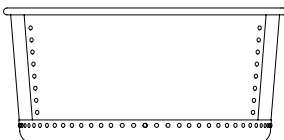
Featured: The Courtyard Copper Planter – Large – Rolled Edge



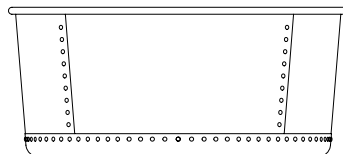
Featured: The Courtyard Copper Planter – Medium – Rolled Edge

**The Courtyard
Copper Planters
Rolled Edge**

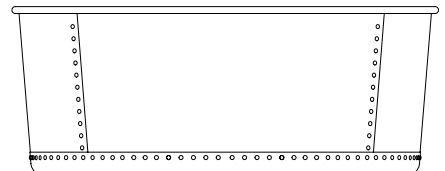
Hand crafted from heavy gauge brass with a rolled-edge top, riveted together and verdigris patinated.



Small
Height 50 cm [1' 7¾"]
Diameter 104.9 cm [3' 5½"]



Medium
Height 55 cm [1' 9¾"]
Diameter 124.9 cm [4' 1¼"]



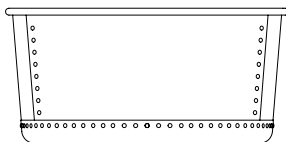
Large
Height 62.2 cm [2' 1½"]
Diameter 157.4 cm [5' 2"]



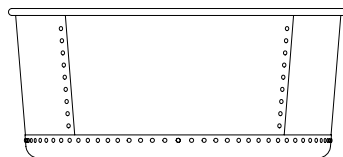
Featured: The Courtyard Copper Planter – Large – Rolled Edge – Watertight

**The Courtyard
Copper Planters**
Rolled Edge – Watertight

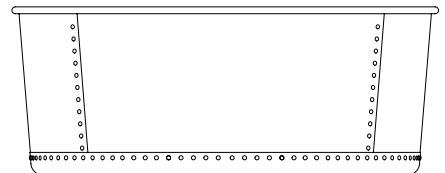
Hand crafted from heavy gauge brass with a rolled-edge top, riveted together and verdigris patinated. A pump pack is available.



Small
Height 50 cm [1' 7¾"]
Diameter 104.9 cm [3' 5½"]



Medium
Height 55 cm [1' 9¾"]
Diameter 124.9 cm [4' 1¼"]



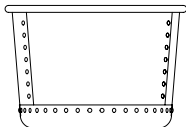
Large
Height 62.2 cm [2' ½"]
Diameter 157.4 cm [5' 2"]



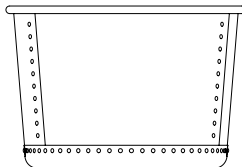
Featured: The Circular Copper Planter – Large – Rolled Edge – Watertight

**The Circular
Copper Planters**
Rolled Edge – Watertight

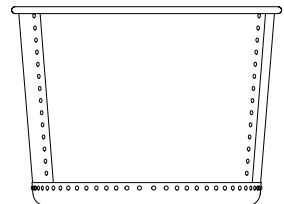
Hand crafted from heavy gauge brass with a rolled-edge top, riveted together and verdigris patinated. A pump pack is available.



Medium
Height 45cm [1' 5¾"]
Width 66.7cm [2' 2¼"]



Large
Height 60cm [1' 11½"]
Width 88.6cm [2' 11"]



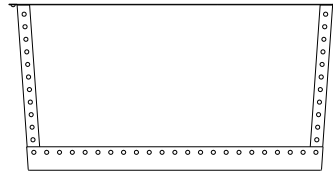
Very Large
Height 73.5cm [2' 5"]
Width 99.7cm [3' 3¼"]





The Rectangular Copper Planters

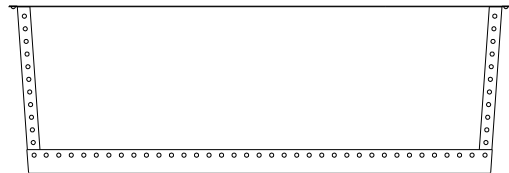
Hand crafted from heavy gauge brass, riveted together and then verdigris patinated to echo the Victorian antique originals.



Small

Height 60 cm [1' 11½"]

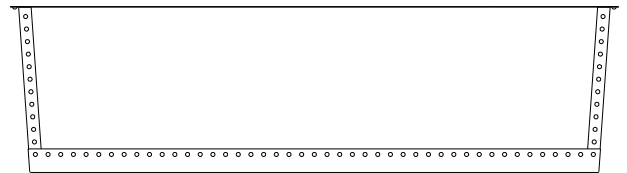
Length 120 cm [3' 11¼"]



Medium

Height 60 cm [1' 11½"]

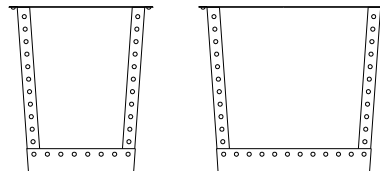
Length 180 cm [5' 10¾"]



Large

Height 60 cm [1' 11½"]

Length 220 cm [7' 2½"]



Available in two depths:

Narrow 52.2 cm [1' 8½"]

Wide 69 cm [2' 3¼"]



**The Rectangular
Copper Planter
Small**

Hand crafted from heavy gauge brass, riveted together and then verdigris patinated to echo the Victorian antique originals.

Height 60cm [1' 11½"]

Length 120cm [3' 11¼"]

Available in two depths:

Narrow 52.2cm [1' 8½"]

Wide 69cm [2' 3¼"]



**The Rectangular
Copper Planter
Medium**

Hand crafted from heavy gauge brass, riveted together and then verdigris patinated to echo the Victorian antique originals.

Height 60 cm [1' 11½"]

Length 180 cm [5' 10¾"]

Available in two depths:

Narrow 52.2 cm [1' 8½"]

Wide 69 cm [2' 3¼"]



Marklarphotography.co.uk, design: jaamealderson.com, created by gordendesign.co.uk

The Rectangular Copper Planter **Large**

Hand crafted from heavy gauge brass, riveted together and then verdigris patinated to echo the Victorian antique originals.

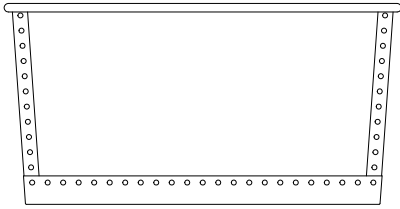
Height 60cm [1' 11½"]
Length 220cm [7' 2½"]

Available in two depths:
Narrow 52.2cm [1' 8½"]
Wide 69cm [2' 3¼"]



**The Rectangular
Copper Planters
Rolled Edge**

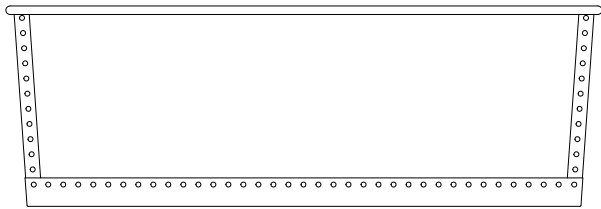
Hand crafted from heavy gauge brass with a rolled-edge top, riveted together and verdigris patinated.



Small

Height 60 cm [1' 11½"]

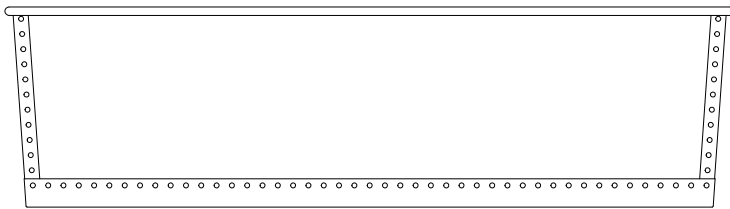
Length 118.7 cm [3' 10¾"]



Medium

Height 60 cm [1' 11½"]

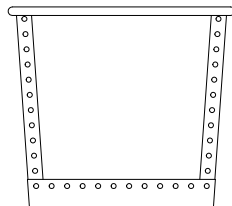
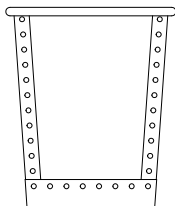
Length 178.7 cm [5' 10¼"]



Large

Height 60 cm [1' 11½"]

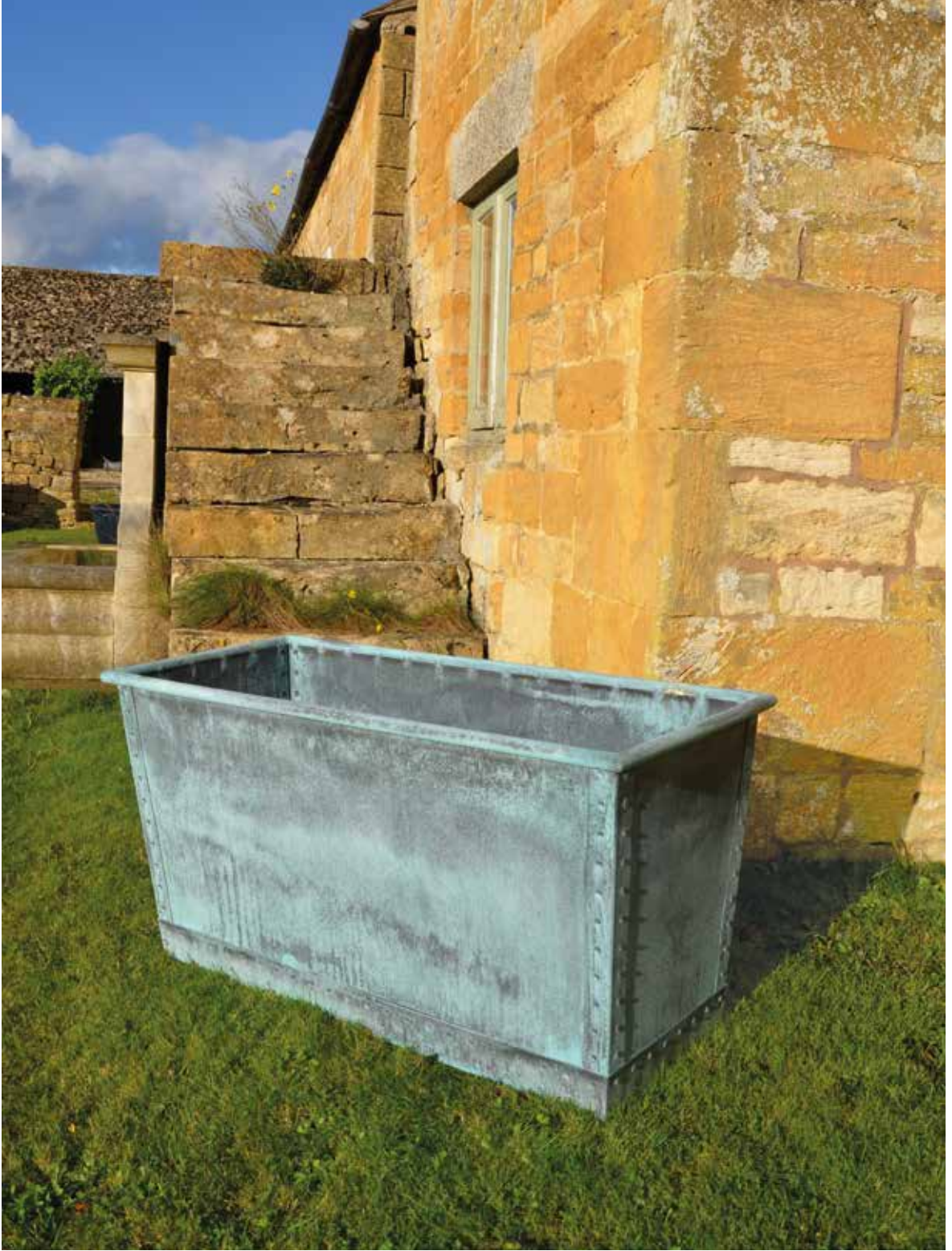
Length 218.7 cm [7' 2"]



Available in two depths

Narrow 50.9 cm [1' 8"]

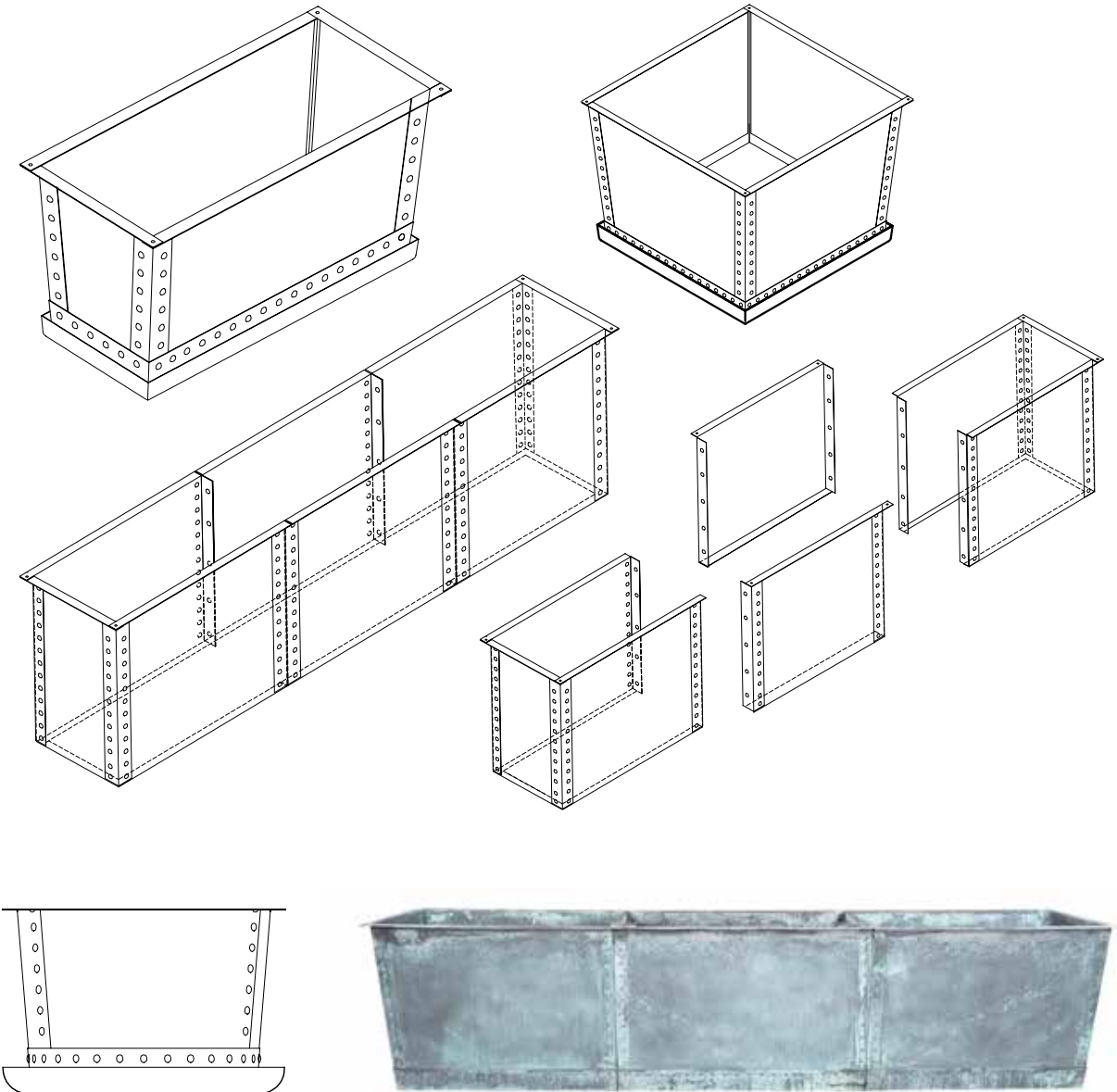
Wide 67.7 cm [2' 2½"]



Featured: The Rectangular Copper Planter – Small – Narrow – Rolled Edge

Bespoke Copper Planters & Drip Trays

Hand crafted planters fabricated from heavy gauge brass, made to your required specification. Drawings and pricing upon request.









**THE CARVED
NATURAL
STONE GARDEN
ORNAMENT
COLLECTION**



The Tazza Urn

A hand carved natural limestone tazza urn having egg and dart carved rim and a lobed body with a ribbed foot and square base.

Height 64cm [2'1"]

Diameter 89cm [2'11"]

Square at base 34cm [1'1½"]



The Campana Urn on Plinth

A hand carved natural limestone campana shaped urn raised on a circular socle with square base, elevated on an optional square plinth with fielded panels.

Overall height 183 cm [6']

Urn height 98 cm [3' 2½"]

Urn diameter 70 cm [2' 3½"]

Plinth height 85 cm [2' 9½"]

Plinth width 60 cm [1' 11½"]

Plinth depth 60 cm [1' 11½"]



The Curved Neo-Classical Seat

A hand carved natural limestone park seat of curved form having panelled back with central roundel, scrolled arm supports and volute feet.

Height 100cm [3' 3"]

Width 313 cm [9' 9"]

Depth 53 cm [1' 9"]



The Baroque Seat

A highly carved natural limestone garden seat, after the 18th century original, having paw foot end supports with arabesque and acanthus decoration. The centre panel with armorial plaque is flanked by blind strap work. The curved top rail has a central grotesque mask surrounded by profusely carved swags, grapes and flowers.

Overall height 127 cm [4' 2"]
Overall width 285 cm [9' 4"]
Seat depth 61 cm [2']



The Neo-Classical Seat

A hand carved natural limestone seat having panelled back with central roundel, dentil moulded arm supports and feet with inswept plinth bases.

Height 102 cm [3' 4"]

Width 166.5 cm [5' 5½"]

Depth 51.5 cm [1' 8¼"]



The Classic Curved Stone Bench

A hand carved natural limestone bench having fluted supports and shaped seat.

Height 48 cm [1'7"]

Width 140 cm [4'7"]

Depth 40 cm [1'3¾"]



The Classic Straight Stone Bench

A hand carved natural limestone bench having rectangular top on fluted shaped supports.

Height 48cm [1'7"]

Width 140 cm [4'7"]

Depth 40cm [1' 3¾"]



**The Classic Straight
Stone Bench
Large**

A hand carved natural limestone bench having rectangular top on fluted shaped supports.

Height 48 cm [1' 7"]

Width 200 cm [6' 6³/₄"]

Depth 40 cm [1' 3³/₄"]

The Obelisk

A hand carved natural limestone obelisk of tapering square form raised upon a panelled square base supported by four spheres.

Height 186 cm [6' 1¼"]

Width 36 cm [1' 2"]

Depth 36 cm [1' 2"]





The Obelisk

Large

A hand carved natural limestone obelisk of tapering square form raised upon a panelled square base supported by four spheres.

Height 249cm [8'2"]

Width 46cm [1'6"]

Depth 46cm [1'6"]

The Octagonal Vine Wellhead

A hand carved natural limestone wellhead with stone step, wrought iron overthrow, pulley and chain.

Height 254 cm [8' 4"]

Width 142 cm [4' 8"]





The Pergola

Bespoke commissions undertaken to supply hand carved natural limestone columns with English oak trellis.

**The Onslow Park
Wall Fountain with
Lead Spout**

A hand carved natural limestone wall fountain having a lead spout centred to the classical back plate. A bespoke fibreglass liner, tinted to match the stone, and pump pack, are available.

Height 156 cm [5' 1½"]

Width 140 cm [4' 7"]

Depth 86 cm [2' 10"]









**THE LEAD
GARDEN
ORNAMENT
& PLANTER
COLLECTION**



The Chiswick Lead Lion

A faithful copy, in lead, of the original 18th century stone versions, probably carved by John Cheere (1709–1787) for Lord Burlington's Chiswick House. Of large proportions these lions, facing forward, recline in a relaxed pose, their front paws outstretched and hind quarters curled around, with the tail sweeping over hind leg. A small number of 18th century lead versions of these lions are extant, however, our models are the only lions available today that come close to replicating the grandeur and elegance of the large scale 18th century originals.

Height 75 cm [2' 5½"]
Width 166 cm [6' 5½"]
Depth 75 cm [2' 5½"]



The Chiswick Lead Lioness

A faithful copy, in lead, of the original 18th century stone versions, probably carved by John Cheere (1709–1787) for Lord Burlington's Chiswick House. Of large proportions these lions, facing forward, recline in a relaxed pose, their front paws outstretched and hind quarters curled around, with the tail tucked under. A small number of 18th century lead versions of these lions are extant, however, our models are the only lions available today that come close to replicating the grandeur and elegance of the large scale 18th century originals.

Height 75 cm [2' 5½"]
Width 166 cm [6' 5½"]
Depth 75 cm [2' 5½"]

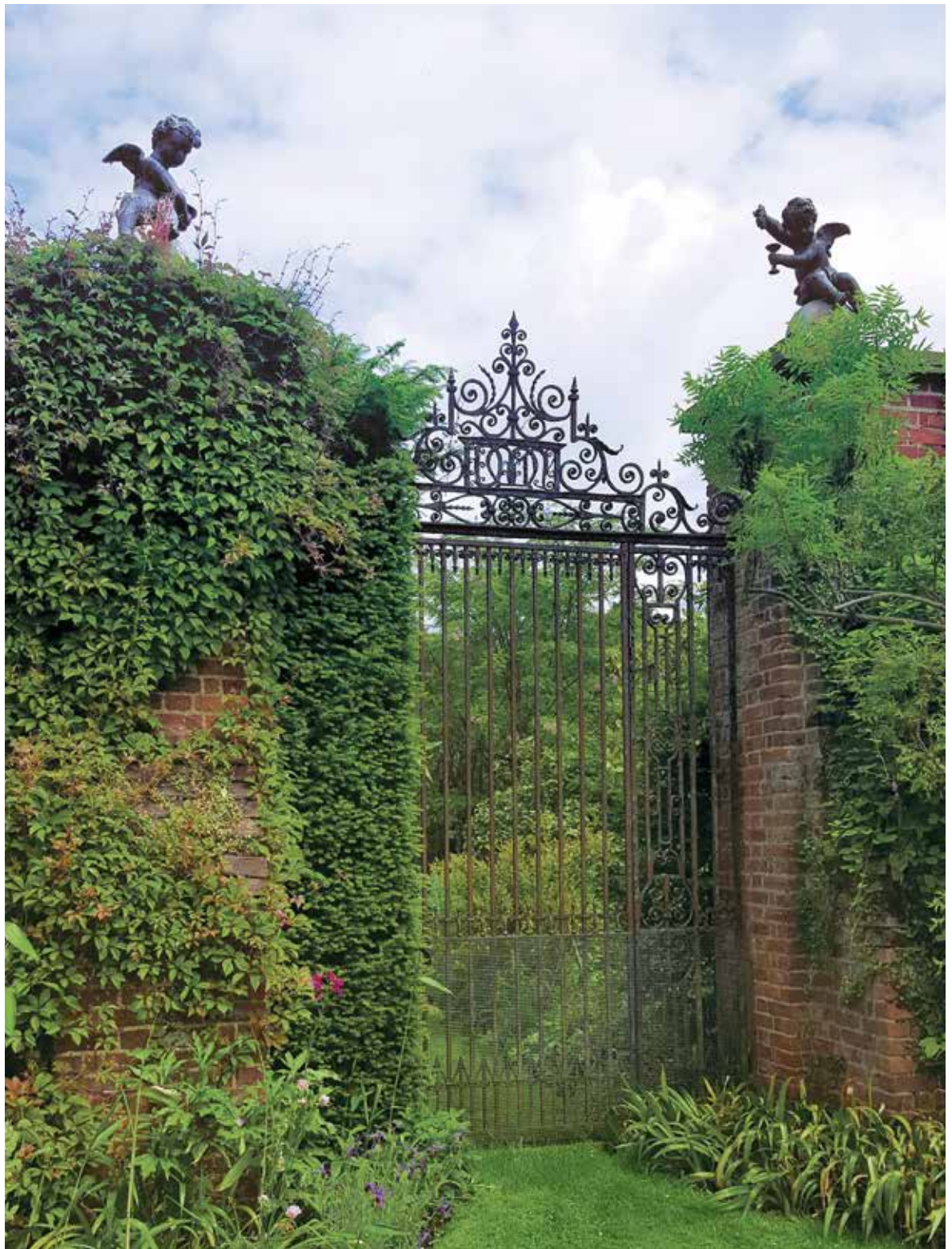


**The Winged Lead
Putti Finials**

A pair of winged lead Putti seated upon artificial stone spheres, after the 18th century originals.

Height 86 cm [2'10"]

Width 61 cm [2']



The Neo-Classical Lead Finial

A lead finial urn in the Neo-classic style having thumbnail groove decoration to the main body topped with swags and two masks, with a decorative lid and small finial, raised on a circular socle.

Height 60cm [1' 11½"]
Diameter 40cm [1' 3¾"]







The Townhouse Lead Planters

A lead planter of circular form with drainage holes to the base.

Small

Height 51 cm [1' 8"]
Diameter 61 cm [2']

Medium

Height 61 cm [2']
Diameter 76 cm [2' 6"]

Large

Height 75 cm [2' 6"]
Diameter 91.5 cm [3']



**The Townhouse
Lead Planter
Small – Lion Mask**

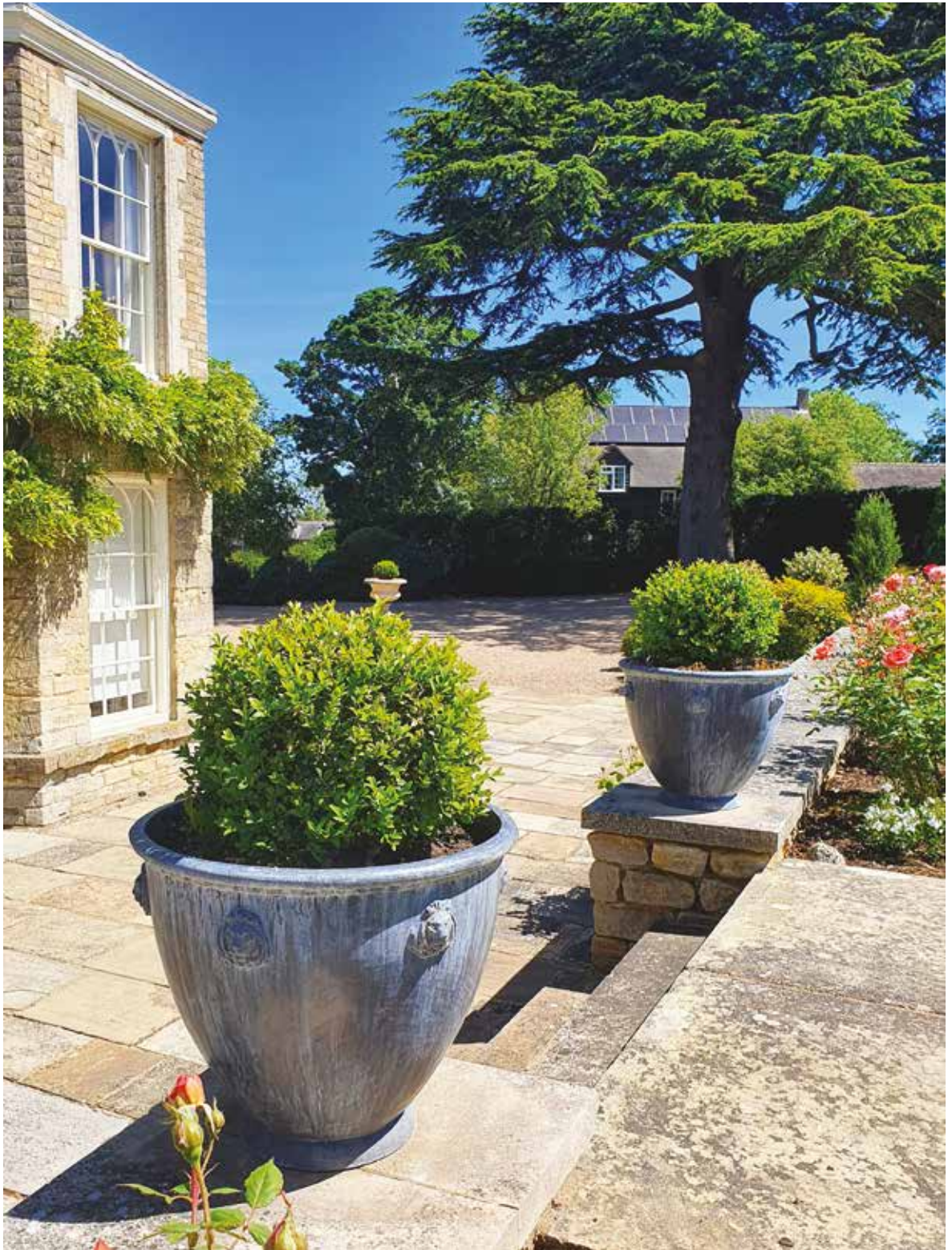
After the antique original, a fine quality lead garden planter of circular form having applied lion mask below the rim.

Height 51 cm [1' 8"]
Diameter 61 cm [2']

**Also available
in Medium**

Height 61 cm [2']
Diameter 76 cm [2' 6"]









**THE CURATED
GARDEN
COLLECTION**



The Contemporary Slat-Back Hardwood Seat with Two Chairs and a Circular Table

Handmade from sustainably sourced, Forest Stewardship Council (FSC) Certified, Cumaru hardwood, this foldable garden furniture is maintenance free with no need for oil, wax or varnish. This dense hardwood, with its interlocking grain and natural oils, can be left outside all year for a lifetime of use.

Seat height 90 cm [2' 11½"]

Seat width 150 cm [4' 11"]

Seat depth 70 cm [2' 3½"]

Chair height 90 cm [2' 11½"]

Chair width 52 cm [1' 8½"]

Chair depth 88 cm [2' 10¾"]

Table height 35 cm [1' 1¾"]

Table diameter 66 cm [2' 2"]



The Contemporary Slat-Back Hardwood Pair of Chairs with Square Table/Stool

Handmade from sustainably sourced, Forest Stewardship Council (FSC) Certified, Cumaru hardwood, this foldable garden furniture is maintenance free with no need for oil, wax or varnish. This dense hardwood, with its interlocking grain and natural oils, can be left outside all year for a lifetime of use.

Chair height 90 cm [2' 11½"]

Chair width 52 cm [1' 8½"]

Chair depth 88 cm [2' 10¾"]

Table/Stool height 42 cm [1' 4½"]

Table/Stool width 34 cm [1' 1½"]

Table/Stool depth 34 cm [1' 1½"]



**The Contemporary
Slat-Back Hardwood
Seat**

Height 90 cm [2' 11½"]
Width 150 cm [4' 11"]
Depth 70 cm [2' 3½"]



**The Contemporary
Slat-Back Hardwood
Chair**

Height 90 cm [2' 11½"]
Width 52 cm [1' 8½"]
Depth 88 cm [2' 10¾"]



**The Contemporary
Slat-Back Hardwood
Circular Table with
Ceramic Top**

Height 35 cm [1' 1 $\frac{3}{4}$ "]
Diameter 66 cm [2' 2"]



**The Contemporary Slat-Back
Hardwood Table/Stool**

Height 42 cm [1' 4 $\frac{1}{2}$ "]
Width 34 cm [1' 1 $\frac{1}{2}$ "]
Depth 34 cm [1' 1 $\frac{1}{2}$ "]



The Farmhouse Garden Dining Table and Benches Set

Joined using recycled teak, this large scale garden table and benches set will stay outside all year and gently weather in time to a silvery grey. Seats 8.

Table height 77 cm [2' 6¼"]

Table length 250 cm [8' 2½"]

Table width 100 cm [3' 3½"]

Bench height 46.5 cm [1' 6¼"]

Bench length 250 cm [8' 2½"]

Bench width 42 cm [1' 4½"]



**The Farmhouse
Garden Dining Table
and Benches Set
Large**

Joined using recycled teak, this large scale garden table and benches set will stay outside all year and gently weather in time to a silvery grey. Seats 10.

Table height 77 cm [2' 6¼"]

Table length 300 cm [9' 10"]

Table width 100 cm [3' 3½"]

Bench height 46.5 cm [1' 6¼"]

Bench length 300 cm [9' 10"]

Bench width 42 cm [1' 4½"]



The Daini

A bronze deer cast via the lost wax process, being a copy of the original found in the Villa dei Papiri, Herculaneum.

The Daini as a handed pair is also available.

Height 87 cm [2' 10¹/₄"]

Width 74 cm [2' 5¹/₄"]

Depth 22 cm [8³/₄"]



The Inverted Sundial Pedestal

A hand carved natural limestone sundial pedestal of tapering form, available with choice of armillary sphere.

With Zenith Armillary Sphere

Overall height
178 cm [5' 10"]

Square at base
34 cm [1' 1½"]

Sphere diameter
47 cm [1' 6½"]





The Inverted Sundial Pedestal

A hand carved natural limestone sundial pedestal of tapering form, available with choice of armillary sphere.

With Greenwich Armillary Sphere

Overall height
198cm [6' 6"]

Square at base
34cm [1' 1½"]

Sphere diameter
70cm [2' 3½"]

**The Solstice
Sundial Pedestal**

A hand carved natural limestone sundial pedestal of elegant baluster form, available with choice of armillary sphere.

**With Zenith Armillary
Sphere**

Overall height
172.5 cm [5' 8"]
Square at base
36 cm [1' 2"]





**The Zenith
Armillary Sphere**

A verdigris patinated brass armillary sphere, pierced with an arrow and calibrated with the hours. Mounted upon a bell shaped support.

Overall height 74 cm [2' 5"]
Sphere diameter 47 cm [1' 6½"]
Diameter at base 17 cm [6½"]



**The Greenwich
Armillary Sphere**

A verdigris patinated brass armillary sphere, pierced with an arrow and calibrated with the hours. Mounted upon a bell shaped support.

Overall height 94 cm [3' 1"]
Sphere diameter 70 cm [2' 3½"]
Diameter at base 17 cm [6½"]



The Ham House Coado Stone Pineapple Finial

A fine model based on the 18th century original made by Mrs Eleanor Coado, an example of which can be seen at Ham House, Twickenham. Here we have these handsome finials handcrafted in terracotta, being in the same material as developed by Coado in the 18th century – its twice fired mixture, including silica, makes this material impervious to the weather, hence we still have extant such fine examples of Mrs Coado's stone adorning the best houses and gardens in the country.

Height 86 cm [2' 10"]

Diameter 52 cm [1' 8½"]

Square at base 30 cm [11¾"]





**The Tree of Life
Wall Panel – Circular**

The decorative panel, incorporating a tree with birds of paradise, is hand punched from recycled oil drums and finished with a varnish.

Diameter 86.5 cm [2' 10"]

*Please note that this item will
rust in time when outside*



The Tree of Life Wall Panel

The decorative panel, incorporating a tree with birds of paradise, is hand punched from recycled oil drums and finished with a varnish.

Diameter 86.5 cm [2' 10"]

*Please note that this item will
rust in time when outside*

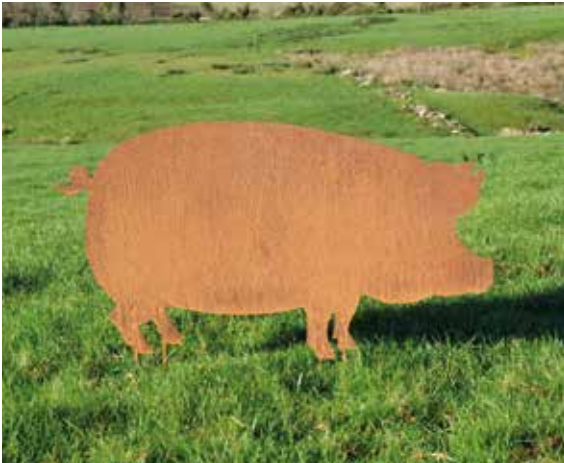


'Dolly' The Rusty Sheep

A rusty iron sheep, available singly or as a flock.

Height 51 cm [1' 8"]

Width 55 cm [1' 9½"]



'Colin' The Rusty Pig

A rusty iron pig, available singly or as a sounder.

Height 48 cm [1' 7"]

Width 94 cm [3' 1"]



'Rudolph' The Rusty Reindeer

A rusty iron reindeer, available singly or as a herd.

Height 75 cm [2' 5½"]

Width 71 cm [2' 4"]



The Rusty Blooms

An assemblage of rusty iron tulips with stems and leaves, creating a flexible sculptural installation.

Height 122 cm [4']





**PRICING &
INFORMATION**

ARCHITECTURAL HERITAGE

— GARDEN ANTIQUES —



Specialising in Antique Garden Ornament, Statuary and Fountains for over 40 years, we carry an extensive inventory to supply clients with the finest examples of garden antiques on the market today.





Chelsea Flower Show



Galleries and Garden at Taddington

ARCHITECTURAL HERITAGE

— MODERN BRITISH ART —



We have put the **ART** into **Architectural Heritage** with our offering of Modern British Art, primarily, but not exclusively, specialising in 20th century British sculpture. Fine examples of sculpture, paintings and works on paper, by established and interesting artists, are exhibited both here in our gallery at Taddington and at Fine Art Fairs in London.





Our Gallery



Art Fairs

ARCHITECTURAL HERITAGE

— ARCHITECTURAL INTERIORS —

In its earliest incarnation Architectural Heritage dealt primarily in antique architectural elements. Over the years we have grown and diversified, however, we have still retained our expertise in: antique panelling, chimneypieces, staircases, stained glass and unusual architectural elements.

To complement the antique architectural interiors, we also undertake commissions to carve, in natural limestone, bespoke stone chimneypieces.





ARCHITECTURAL HERITAGE

— CONSULTANCY —

Valuations

Whether you are looking to sell an item, seeking advice for insurance or probate purposes, or need an expert witness, we can assist.

Alex Puddy is an elected member of The British Antique Dealers' Association (BADA), The Association of Art & Antiques Dealers (LAPADA) and Chairman of The Cotswolds Art & Antique Dealers' Association (CADA), and with over 25 years' experience is well qualified to give a professional appraisal.

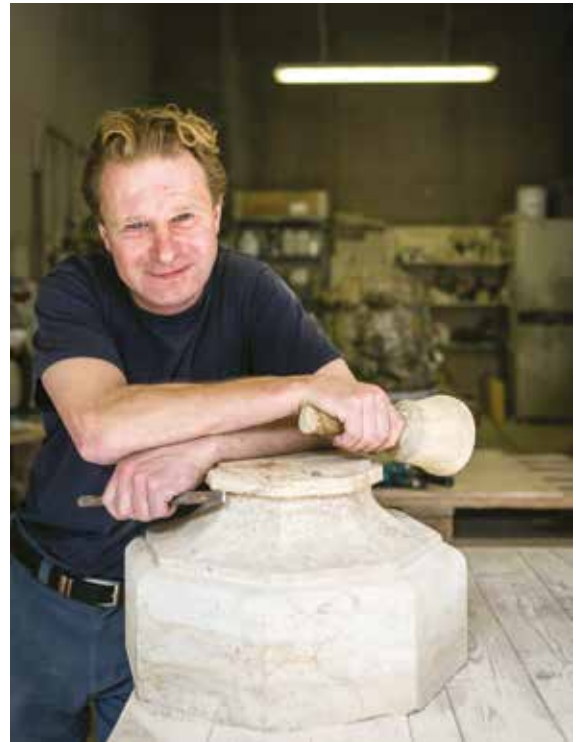
Please do contact us to discuss your requirements and we will in turn advise on our fee structure.





Restoration

As specialists in our field we have, over the years, developed an unequalled understanding of the care required to conserve antique garden statuary and ornament. Adam Puddy, a qualified master stonemason, is an expert in the restoration of natural stone and composition stone. In addition, we can also advise on the conservation of garden statuary and ornament in other materials such as: marble, lead, bronze and terracotta. Please do contact us for advice and a quotation.



PRICE LIST 2022

PAGE NO.	THE FORGED IRON GARDEN DINING & FURNITURE COLLECTON	PRICE (EXCL. VAT)
4	The Small Circular Garden Table with Two Ladderback Garden Chairs	£ 1,060.00
5	The Small Circular Garden Table with Two Low Ladderback Carver Garden Chairs	£ 1,940.00
6	The Small Circular Garden Table with Two Sprung Garden Chairs	£ 1,020.00
7	The Small Circular Garden Table with Two Sprung Carver Garden Chairs	£ 1,060.00
8	The Medium Circular Garden Dining Table with Four Ladderback Garden Chairs	£ 2,440.00
9	The Medium Circular Garden Dining Table with Four Ladderback Carver Garden Chairs	£ 4,200.00
10	The Medium Circular Garden Dining Table with Six Ladderback Garden Chairs	£ 3,160.00
12	The Large Circular Garden Dining Table with Four Ladderback Carver Garden Chairs	£ 4,400.00
13	The Large Circular Garden Dining Table with Six Ladderback Garden Chairs	£ 3,360.00
14	The Small Square Garden Dining Table with Four Ladderback Garden Chairs	£ 2,440.00
16	The Small Rectangular Garden Dining Table with Four Ladderback Garden Chairs	£ 2,840.00
18	The Small Rectangular Garden Dining Table with Six Ladderback Garden Chairs	£ 3,560.00
19	The Small Rectangular Garden Dining Table with Four Ladderback Garden Chairs and Two Ladderback Carver Garden Chairs	£ 4,440.00
20	The Large Rectangular Garden Dining Table with Eight Ladderback Garden Chairs	£ 4,480.00
21	The Large Rectangular Garden Dining Table with Six Ladderback Garden Chairs and Two Ladderback Carver Garden Chairs	£ 5,360.00
22	The Large Rectangular Garden Dining Table with Ten Ladderback Garden Chairs	£ 5,200.00
23	The Large Rectangular Garden Dining Table with Eight Ladderback Garden Chairs and Two Ladderback Carver Garden Chairs	£ 6,080.00

PAGE NO.		PRICE (EXCL. VAT)
24	The Rectangular Garden Coffee Table with Two Low Ladderback Carver Garden Chairs and a Small Straight Ladderback Garden Seat	£ 3,400.00
25	The Rectangular Garden Coffee Table with Two Low Ladderback Carver Garden Chairs and a Medium Straight Ladderback Garden Seat	£ 3,600.00
26	The Small Straight Ladderback Garden Seat	£ 1,100.00
27	The Medium Straight Ladderback Garden Seat	£ 1,300.00
28	The Large Straight Ladderback Garden Seat	£ 1,500.00
29	The Semi-Circular Ladderback Garden Seat	£ 1,600.00
30	The Semi-Circular Ladderback Garden Tree Seat with Arms	£ 1,600.00
31	The Circular Ladderback Garden Tree Seat	£ 3,200.00
32	The Sprung Garden Chair	£ 340.00
32	The Sprung Carver Garden Chair	£ 360.00
34	The Ladderback Garden Chair	£ 360.00
34	The Ladderback Carver Garden Chair – High	£ 800.00
34	The Ladderback Carver Garden Chair – Low	£ 800.00
35	The Small Circular Garden Table	£ 340.00
35	The Medium Circular Garden Dining Table	£ 1,000.00
35	The Large Circular Garden Dining Table	£ 1,200.00
36	The Small Square Garden Dining Table	£ 1,000.00
36	The Rectangular Garden Coffee Table	£ 700.00
37	The Small Rectangular Garden Dining Table	£ 1,400.00
37	The Large Rectangular Garden Dining Table	£ 1,600.00

Nb. Our forged iron furniture is galvanised and then primed and painted to our standard white or, alternatively, for an additional 12.5% charge, your order can be painted to your chosen colour and brand.

PAGE NO.	THE AGE-PATINATED ARTIFICIAL STONE GARDEN FOUNTAIN & ORNAMENT COLLECTION	PRICE (EXCL. VAT)
40	The Large Low Single Tier Fountain	£ 3,600.00
	The Large Low Single Tier Fountain Pump Pack	£ 400.00
41	The Large Single Tier Fountain	£ 4,000.00
	The Large Single Tier Fountain Pump Pack	£ 400.00
42	The Two Tier Fountain	£ 6,800.00
	The Two Tier Fountain Pump Pack	£ 400.00
42	The Decorative Circular Pool Surround	£ 4,400.00
43	The Great Westwood Pool Surround	£ 6,600.00
44	The Single Tier Fountain	£ 3,000.00
	The Single Tier Fountain Pump Pack	£ 300.00
44	The Circular Pool Surround	£ 3,800.00
45	The Rectangular Pool Surround	£ 6,000.00
46	The Wall Fountain with Lion Mask	£ 2,800.00
	The Wall Fountain with Lion Mask Pump Pack	£ 300.00
48	The Sphere – Small	£ 350.00
48	The Sphere – Medium	£ 500.00
48	The Sphere – Large	£ 700.00
50	The William IV Sundial Pedestal with Greenwich Armillary Sphere	£ 3,000.00

THE VERDIGRIS COPPER GARDEN PLANTER COLLECTION

The Sissinghurst Castle Garden Copper Planters

57	The Sissinghurst Castle Garden Copper Planter	£ 2,850.00
57	The Sissinghurst Castle Garden Copper Planter – Rolled Edge	£ 3,250.00

PAGE NO.	The Circular Copper Planters	PRICE (EXCL. VAT)
60	The Circular Copper Planter – Small	£ 1,000.00
66	The Circular Copper Planter – Small – Rolled Edge	£ 1,100.00
61	The Circular Copper Planter – Medium	£ 1,550.00
66	The Circular Copper Planter – Medium – Rolled Edge	£ 1,650.00
91	The Circular Copper Planter – Medium – Rolled Edge – Watertight	£ 2,000.00
62	The Circular Copper Planter – Large	£ 2,000.00
66	The Circular Copper Planter – Large – Rolled Edge	£ 2,200.00
91	The Circular Copper Planter – Large – Rolled Edge – Watertight	£ 2,650.00
64	The Circular Copper Planter – Very Large	£ 2,600.00
66	The Circular Copper Planter – Very Large – Rolled Edge	£ 2,800.00
91	The Circular Copper Planter – Very Large – Rolled Edge – Watertight	£ 3,300.00
The Square Copper Planters		
70	The Square Copper Planter – Small	£ 1,200.00
78	The Square Copper Planter – Small – Rolled Edge	£ 1,300.00
72	The Square Copper Planter – Medium	£ 1,500.00
78	The Square Copper Planter – Medium – Rolled Edge	£ 1,700.00
74	The Square Copper Planter – Large	£ 2,200.00
78	The Square Copper Planter – Large – Rolled Edge	£ 2,600.00
76	The Square Copper Planter – Very Large	£ 3,100.00
78	The Square Copper Planter – Very Large – Rolled Edge	£ 3,500.00
The Circular Terrace Copper Planters		
80	The Circular Terrace Copper Planter – Small	£ 1,800.00
80	The Circular Terrace Copper Planter – Small – Rolled Edge	£ 2,000.00
80	The Circular Terrace Copper Planter – Medium	£ 2,000.00
80	The Circular Terrace Copper Planter – Medium – Rolled Edge	£ 2,200.00
80	The Circular Terrace Copper Planter – Large	£ 2,400.00
80	The Circular Terrace Copper Planter – Large – Rolled Edge	£ 2,600.00
The Square Terrace Copper Planters		
82	The Square Terrace Copper Planter – Small	£ 1,900.00
82	The Square Terrace Copper Planter – Small – Rolled Edge	£ 2,100.00
82	The Square Terrace Copper Planter – Medium	£ 2,100.00
82	The Square Terrace Copper Planter – Medium – Rolled Edge	£ 2,300.00
82	The Square Terrace Copper Planter – Large	£ 2,600.00
82	The Square Terrace Copper Planter – Large – Rolled Edge	£ 2,800.00

PAGE NO.	The Courtyard Copper Planters	PRICE (EXCL. VAT)
85	The Courtyard Copper Planter – Small	£ 2,650.00
89	The Courtyard Copper Planter – Small – Rolled Edge	£ 2,850.00
90	The Courtyard Copper Planter – Small – Rolled Edge – Watertight	£ 3,100.00
86	The Courtyard Copper Planter – Medium	£ 3,550.00
89	The Courtyard Copper Planter – Medium – Rolled Edge	£ 3,850.00
90	The Courtyard Copper Planter – Medium – Rolled Edge – Watertight	£ 4,200.00
87	The Courtyard Copper Planter – Large	£ 4,700.00
89	The Courtyard Copper Planter – Large – Rolled Edge	£ 5,100.00
90	The Courtyard Copper Planter – Large – Rolled Edge – Watertight	£ 5,500.00

The Rectangular Copper Planters

94	The Rectangular Copper Planter – Small – Narrow	£ 2,400.00
98	The Rectangular Copper Planter – Small – Narrow – Rolled Edge	£ 2,700.00
94	The Rectangular Copper Planter – Small – Wide	£ 2,700.00
98	The Rectangular Copper Planter – Small – Wide – Rolled Edge	£ 3,000.00
95	The Rectangular Copper Planter – Medium – Narrow	£ 3,300.00
98	The Rectangular Copper Planter – Medium – Narrow – Rolled Edge	£ 3,600.00
95	The Rectangular Copper Planter – Medium – Wide	£ 3,700.00
98	The Rectangular Copper Planter – Medium – Wide – Rolled Edge	£ 4,000.00
96	The Rectangular Copper Planter – Large – Narrow	£ 4,400.00
98	The Rectangular Copper Planter – Large – Narrow – Rolled Edge	£ 4,800.00
96	The Rectangular Copper Planter – Large – Wide	£ 5,000.00
98	The Rectangular Copper Planter – Large – Wide – Rolled Edge	£ 5,500.00

THE CARVED NATURAL STONE GARDEN ORNAMENT COLLECTION

104	The Tazza Urn	£ 2,200.00
105	The Campana Urn on Plinth with Fielded Panels	£ 4,800.00
105	The Campana Urn	£ 2,800.00
105	The Plinth with Fielded Panels	£ 2,000.00
106	The Curved Neo-Classical Seat	£ 6,400.00
107	The Baroque Seat	£ 8,000.00
108	The Neo-Classical Seat	£ 4,600.00
109	The Classic Curved Stone Bench	£ 1,400.00
110	The Classic Straight Stone Bench	£ 1,400.00
111	The Classic Straight Stone Bench – Large	£ 1,800.00
112	The Obelisk	£ 2,400.00
113	The Obelisk – Large	£ 3,200.00
114	The Octagonal Vine Wellhead	£ 5,800.00

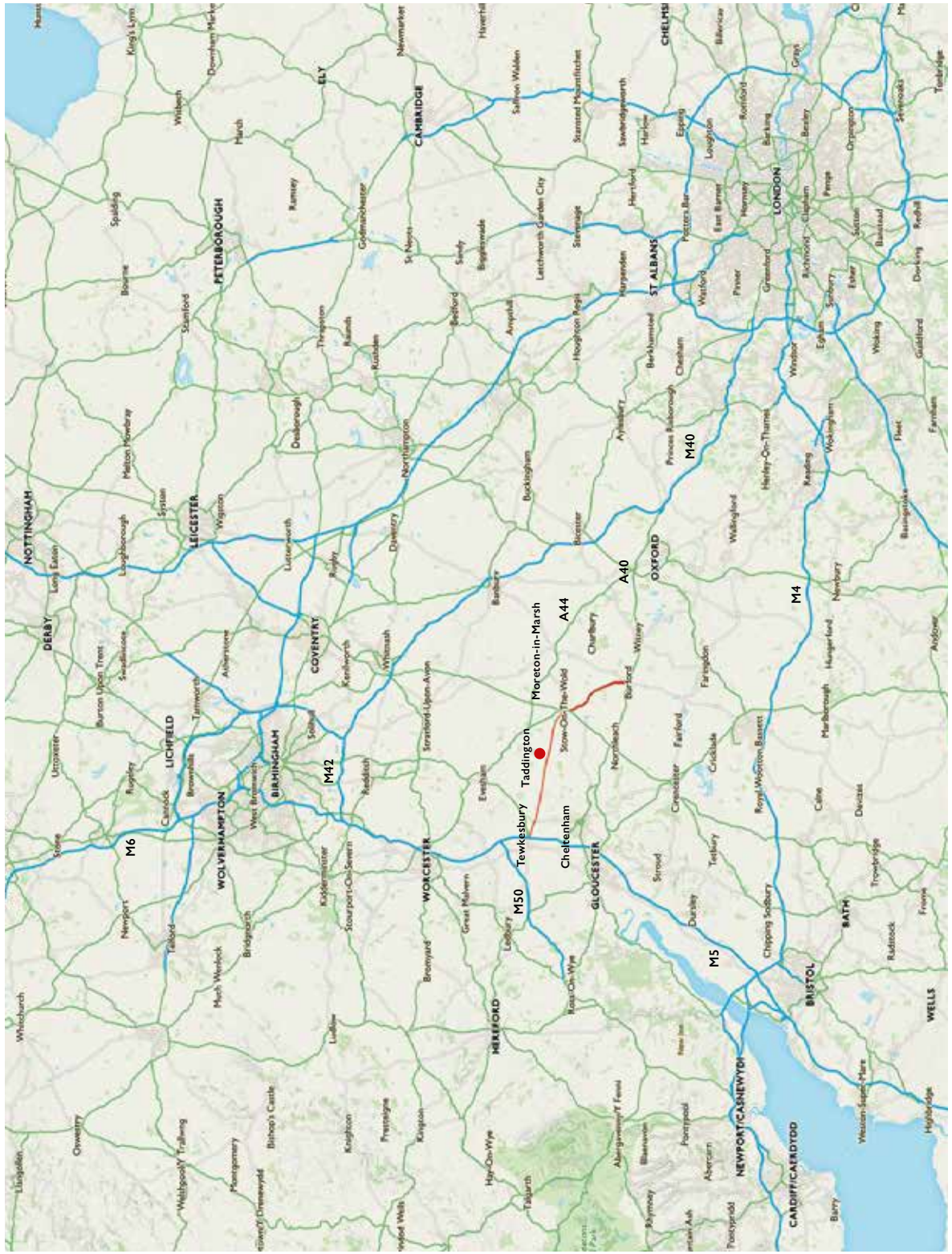
PAGE NO.	<i>The Carved Natural Stone Garden Ornament Collection Cont.</i>	PRICE (EXCL. VAT)
115	The Pergola	£ 12,000.00
116	The Onslow Park Wall Fountain with Lead Spout	£ 6,800.00
	The Onslow Park Wall Fountain Fibreglass Liner	£ 600.00
	The Onslow Park Wall Fountain Pump Pack	£ 300.00

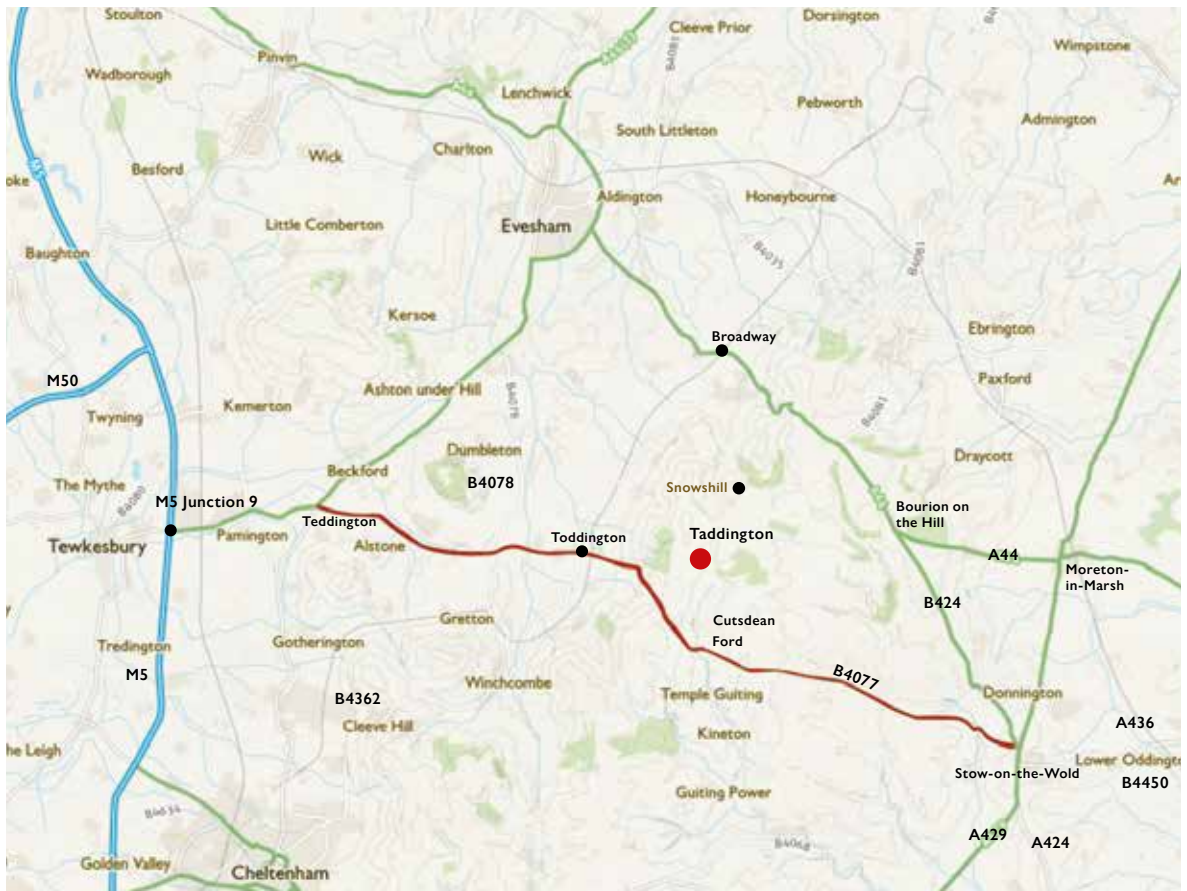
THE LEAD GARDEN ORNAMENT & PLANTER COLLECTION

120	The Chiswick Lead Lion	£ 24,000.00
121	The Chiswick Lead Lioness	£ 24,000.00
122	The Winged Lead Putti Finials	£ 4,000.00
124	The Neo-Classical Lead Finial	£ 800.00
126	The Townhouse Lead Planter – Small	£ 2,200.00
126	The Townhouse Lead Planter – Medium	£ 2,800.00
126	The Townhouse Lead Planter – Large	£ 3,400.00
128	The Townhouse Lead Planter – Small – Lion Mask	£ 2,400.00
128	The Townhouse Lead Planter – Medium – Lion Mask	£ 3,000.00

THE CURATED GARDEN COLLECTION

132	The Contemporary Slat-Back Hardwood Seat with Two Chairs and a Circular Table	£ 2,200.00
133	The Contemporary Slat-Back Hardwood Pair of Chairs with Square Table/Stool	£ 750.00
134	The Contemporary Slat-Back Hardwood Seat	£ 1,000.00
134	The Contemporary Slat-Back Hardwood Chair	£ 300.00
135	The Contemporary Slat-Back Hardwood Circular Table with Ceramic Top	£ 600.00
135	The Contemporary Slat-Back Hardwood Table/Stool	£ 150.00
136	The Farmhouse Garden Dining Table and Benches Set	£ 4,000.00
137	The Farmhouse Garden Dining Table and Benches Set – Large	£ 5,200.00
138	The Daini	£ 7,800.00
140	The Inverted Sundial Pedestal with Zenith Armillary Sphere	£ 2,200.00
141	The Inverted Sundial Pedestal with Greenwich Armillary Sphere	£ 2,400.00
142	The Solstice Sundial Pedestal with Zenith Armillary Sphere	£ 2,400.00
143	The Zenith Armillary Sphere	£ 1,200.00
143	The Greenwich Armillary Sphere	£ 1,400.00
144	The Ham House Coade Stone Pineapple Finial	£ 6,000.00
146	The Tree of Life Wall Panel – Circular	£ 300.00
147	The Tree of Life Wall Panel	£ 300.00
148	The Rusty Sheep 'Dolly'	£ 140.00
148	The Rusty Pig 'Colin'	£ 240.00
148	The Rusty Reindeer 'Rudolph'	£ 180.00
149	The Rusty Bloom	£ 40.00





Location

Taddington Manor
Taddington
Nr. Cutsdean
Gloucestershire
England GL54 5RY

Architectural Heritage is situated in the grounds of Taddington Manor, in the tiny hamlet of Taddington. The galleries and garden are open year round.

We are one hour away from Oxford, Bristol and Birmingham, and two hours from London.



The British Antique Dealers' Association



LAPADA

The Association of Art & Antiques Dealers



The Cotswold Art & Antiques Dealers' Association



The Architectural Dealers' Association



Anti Copying in Design



Forest Carbon Club

ARCHITECTURAL HERITAGE

GARDEN | MODERN BRITISH | INTERIOR

Taddington Manor
Taddington, Nr. Cutsdean
Gloucestershire
England GL54 5RY
office@architectural-heritage.co.uk
www.architectural-heritage.co.uk
Tel: +44 [0] 1386 584414

9.00am – 5.00pm Monday – Friday
Saturdays by Appointment
Closed Sundays and Bank Holidays



Follow us on Instagram



@ahgardencollections



@ahgardenantiques



@ahmodernbritishart

Designed & typeset by etal design consultants.

Printed in Great Britain by Stephens & George Ltd, on Edixion

Offset. Edixion is produced from sustainable sources and is fully recyclable.

Copyright © Architectural Heritage 2022. All rights reserved. No part of this publication may be reproduced, transmitted, or stored in a retrieval system, in any form, or by any means, without permission in writing from Architectural Heritage.



If undelivered please return to: Architectural Heritage, Taddington Manor, Taddington, Cheltenham, Gloucestershire, GL54 5RY, UK
If your details have changed or you no longer wish to receive catalogues please email: office@architectural-heritage.co.uk

